

# Changes to Waste and Recycling



**LANCASTER**  
**CITY COUNCIL**

*Promoting City, Coast & Countryside*

# Overview

01



Overview of national and regional changes



Our approach to helping residents - bins, education, enforcement



How landlords can help us improve waste management in our district, and how we can work together moving forward.



## The introduction of the Government's Waste Strategy means that Lancaster City Council, as the Waste Collection Authority, are required to:

- Reduce the volume of residual waste sent to landfill/incineration.
- Encourage higher levels of recycling and composting
- (LCC's current recycling rates are 36%, which is lower than the national target of 65%)
- Start collecting food waste weekly
- Reduce the carbon footprint of our waste operations.



## Lancaster City Council Waste Changes

- Step 1: New Recycling Wheelie Bins
- Step 2: Feb-March: Delivering food waste caddies and starting collections the week after delivery
- Step 3: From 30<sup>th</sup> March, 3 weekly cycle for collections and food waste collections weekly

## SERVICE CHANGES

September 2025 - February 2026

### NEW BINS

We're upgrading your recycling boxes for wheeled recycling bins.

You can start using these straight away!



February - April 2026

### FOOD WASTE

We'll be providing you with everything you need to recycle your food waste.

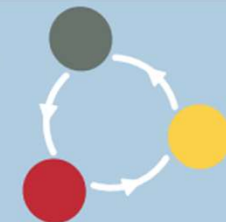
Weekly collections will begin the week after we deliver!



From April 2026

### THREE WEEKLY

We will begin collecting **grey bins** (general waste), **red bins** (plastics, glass and cans) and **yellow bins** (paper and cardboard) on a three week cycle.



**SCAN ME**  
to find out more or visit

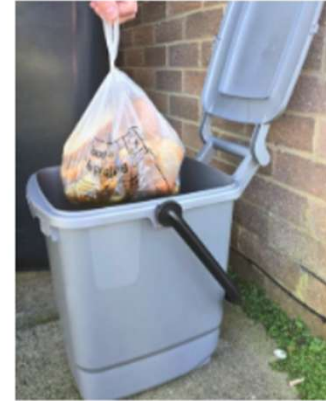


[lancaster.gov.uk/waste-and-recycling](https://lancaster.gov.uk/waste-and-recycling)





## FOOD WASTE EVERY WEEK



## INTRODUCTION OF WEEKLY KERBSIDE FOOD WASTE COLLECTIONS (FEBRUARY-MARCH 2026)



Weekly food waste collections are a statutory Government requirement.



In the Lancaster district, roughly 28% of waste thrown away in the general rubbish is food waste. Not only is this a waste of money and resources, but it is estimated to contribute 8-10% of global man-made greenhouse gas emissions.



# FOOD WASTE STARTER KIT – ISSUED TO ALL PROPERTIES



2 rolls of caddy liners



7L Kitchen Caddy



23L Outdoor Caddy with lockable handle

Place any raw or cooked food in your caddy, including the following:

Bread and pastries	Dairy	Fish	Fruit and vegetables	Meat and bones	Rice, pasta and beans	Tea and coffee grounds

You can even scrape uneaten food straight into your caddy.

Information booklet

your collection day is **FRIDAY**

August 2023	4	11	18	25	
September 2023	1	8	15	22	29
October 2023	6	13	20	27	
November 2023	3	10	17	24	
There will be no green bin collections between Monday 11th December 2023 and Friday 1st February 2024					
December 2023	7	14	21	28	30
January 2024	5	12	19	26	
February 2024	2	9	16	23	
March 2024	1	8	15	22	29
April 2024	5	12	19	26	
May 2024	3	10	17	24	31
June 2024	7	14	21	28	
July 2024	5	12	19	26	
August 2024	2	9	16	23	30

lanaster.gov.uk/bins

Updated collection calendar



Place any raw or cooked food in your caddy, including the following:



You can even scrape uneaten food straight into your caddy.



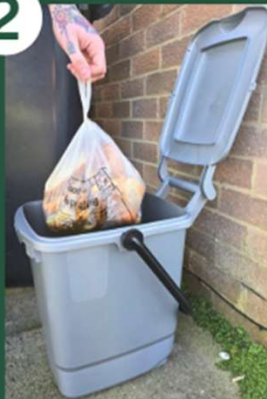
# How do I recycle my food waste?

1



Put a liner in your kitchen caddy and put your food waste in it.

2



When you need to empty your kitchen caddy, remove the liner, tie the top and put it in your outdoor food waste recycling bin.

3



Lock your outdoor food waste recycling bin by bringing the handle to the front.

4



Put your outdoor food waste recycling bin out the front of your property for collection by 7am every week on the day we collect your waste or recycling.



## Our approach to helping residents

**Engagement:** leaflets have been distributed to properties, street meets, drop-in sessions, information on website & social media, radio adverts currently running on Beyond Radio

**Individual Visits:** We understand it isn't a one size fits all. Some properties have limited space & will need an individual assessment which our waste officers can offer. It might be the case that we need to request smaller sized wheelie bins for certain properties

**Increasing Recycling Hubs:** As well as the current Bring sites, we will be adding more recycling hubs to areas which are short on storage space for bins

**Enforcement:** There will be a transition period for people to use the new bins correctly. But if this isn't adhered to over time, it will be handed over to the Enforcement team to manage, which may lead to penalty notices and fines



## How landlords can help us fulfil our statutory requirements

- Check in with tenants to see if they need any help with information about collection days, direct them to our website if they need access to collection calendar
- Ensure tenants have access to the latest information leaflets and they know what goes in each different bin
- Have this info on a noticeboard including the LCC customer service number and the nearest recycling (bring) site and tip
- Ensure tenants know that their recycling bin is to be stored **on their property, not on pavements/in alleys, and will be collected where their grey/general waste bin is collected** e.g. for terraces this will be at the back of properties, no longer at the front (apart from the food waste)
- Purchase extra recycling wheelies from the council's website if tenants are struggling with capacity





More Information



<https://www.lancaster.gov.uk/waste-and-recycling>



Email about Waste Audits & Communal Bins:  
[Recycling@lancaster.gov.uk](mailto:Recycling@lancaster.gov.uk)



Email to request smaller bins:  
[Wastechanges@lancaster.gov.uk](mailto:Wastechanges@lancaster.gov.uk)



Customer Services: 01524 582491



# Questions

