

# Lancaster Maritime Museum

## Visual Story



**This information is to help you  
prepare for a visit to Lancaster  
Maritime Museum**



This is the front of the Maritime Museum building.

The Museum is open from **12pm** until **4pm** from **Friday to Monday**.

To enter, head to the central glass door. It is automatic and opens inward.



On your right, there is another automatic door. Head through this to reach our shop/admission area.



Make your way to the desk, where a member of staff will issue you a ticket, a paper guide, and tell you about our current exhibitions.

Here you can request to borrow our sensory backpack.

# Grab and Go Cafe



In the shop area, we have our Grab and Go Cafe. Here we sell drinks and a variety of snacks. Pick what you would like, place it on a tray, take it to the front desk, and pay there.



Once you have paid for your items, you can head straight through into the Custom House and take a right to find our indoor seating area.



Alternatively, you can head through this door in the shop to enjoy your drinks/snacks in our outdoor seating area.



Once you reach the end of this walkway, take a left to reach the outdoor seating.



This is our outdoor seating area.

Once you have finished with your drinks/snacks. Return your tray to the shop area. Ask a member of staff if you need assistance.

# **Our Buildings and Exhibition Spaces**

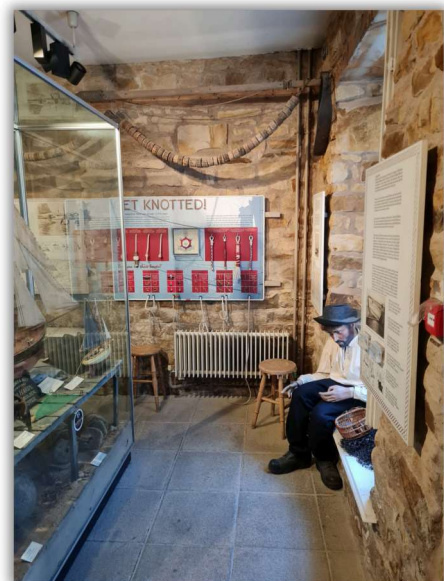
The Maritime Museum is split between two buildings- the **Custom House** and the **Warehouse**. The two buildings are connected by stairs, and also by an external lift.

## **Custom House**

The Custom House has two floors.

On the ground floor, there are displays about the local fishing industry, and information about the importance of the waterways in Lancaster's early history.

**In our replica Fisherman's cottage there is a motion-activated audio clip and a seated mannequin.**





You can head up this spiral staircase to reach the first floor of the Custom House. Here you will find our Transatlantic Slavery Gallery and our Temporary Exhibition space.



If you would rather not use the stairs, head back into the shop area, go past the outdoor seating area and take a right to reach our external lift.



Once you reach level 1, you can cross the wooden jetty to access the first floor of the custom house through our temporary exhibition space.



This is what the temporary exhibition space in the custom house looks like currently (Oct 2025).



**This space changes 2-3 times per year, so it may look different when you visit.**



The Transatlantic Slavery Gallery is connected to the temporary exhibition space. This gallery looks in detail at Lancaster's involvement in the slave trade.

## Warehouse

The Warehouse contains exhibitions about the Lancaster Canal, stagecoaches, the historic Port of Lancaster and gas drilling on Morecambe Bay. It also has a temporary exhibition space.

You can reach the Warehouse via the lift, or via four flights of stairs that start in the shop area of the Custom House.



If you take the lift, this is the view you will see when you exit.



On your left, there is a printed floorplan of the Warehouse area.

There are also two wearable, 3d-printed floorplans that you can borrow to help you navigate the space if needed.



The Warehouse goes in a loop, so you will return to where you started if you follow it round in either direction. There is no particular order that you should follow when you are in the Warehouse.

However, most visitors choose to first go up this small ramp and go to the end of the corridor, where there is a video to watch.



The video is around 10 minutes long and it provides an overview of the maritime history of the local area.

**The video has subtitles and is narrated throughout.**

**This room is dimly lit so that the video can be seen clearly.**



In this space, there is also one of our 'Touch and See' panels.

If you continue round, you will see our replica stagecoach and canal barge, both of which you can go in.



**The stagecoach is only accessible via a small set of steps.**

**There is audio playing in the stagecoach and it is dimly lit inside.**



**The inside of the canal barge is dimly lit and narrow.**



If you continue round the corner, there is a display about trade and how the warehouse building was used originally.

**This gallery contains a number of mannequins near the window.**



In this space, there are also stairs that lead to the small mezzanine area. There is no alternative access to the mezzanine.



The mezzanine has some information about the Vikings, a dug-out boat and various model ships.

**The space is narrow and there are large, protruding, wooden beams.**



Head back down the stairs from the mezzanine to enter our Gas Rig display.

**There is a mannequin positioned to the right of this image.**



When you leave the gas rig display area, you will enter our temporary exhibition space.

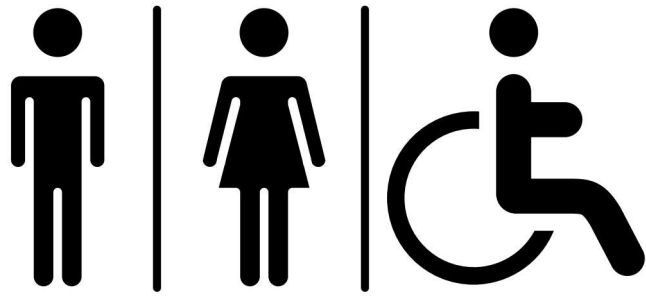
**At present (Oct 2025), our temporary exhibition includes a video with music that plays on a loop.**



When you are ready to leave the Warehouse and return to the shop/admission area you can take the stairs.



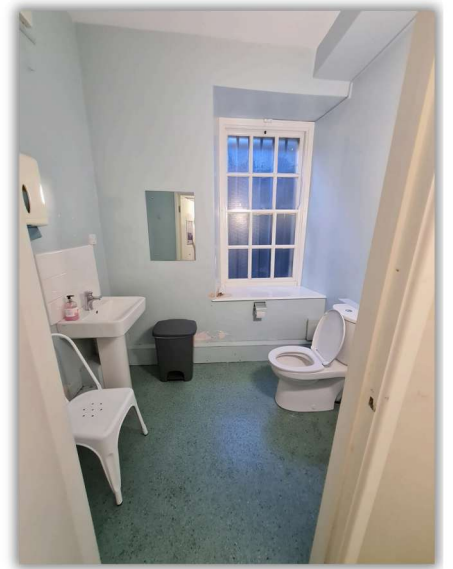
Or you can continue through the temporary exhibition to return to the lift.



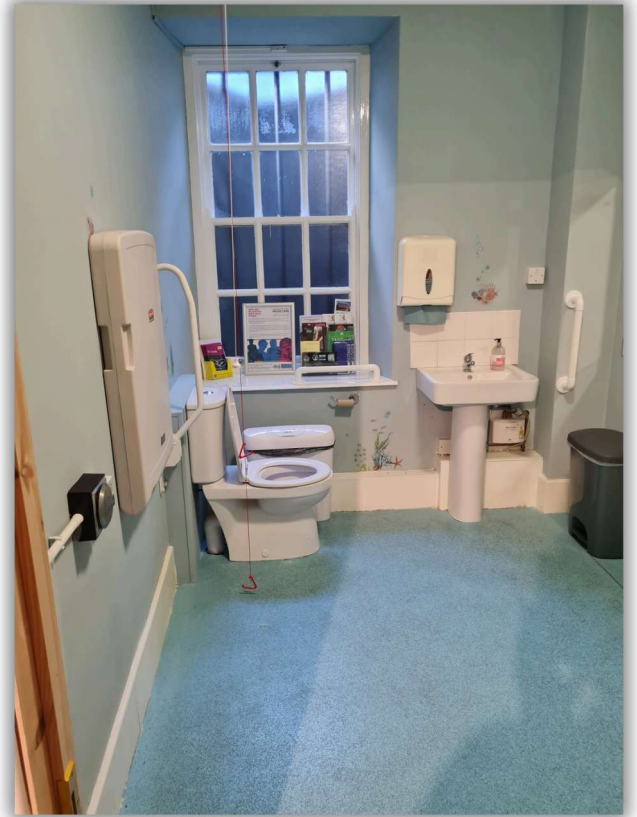
## Toilets

We have two available toilets at the Maritime Museum. Both are located on the ground floor of the Custom House.

They are gender-neutral toilets.



The toilet to the left of the spiral staircase is located behind two manual doors.



The toilet to the right of the spiral staircase is our **accessible toilet**, which also has baby changing facilities.

It has a push-pad operated door, support rails, emergency pull cord and a lever tap.



## **Important Information**

### **Emergency Evacuation**

In the event of a fire or other emergency, a siren will sound in the museum. Find a member of staff (they will be wearing a bright yellow fluorescent vest), and follow their instructions.

Alternatively, follow the green emergency exit signs out of the building. Do not try to use the lift.

If you are unable to exit via the stairs, a trained staff member will help evacuate you using one of our EvacChairs.