

Scotforth Rural Neighbourhood Plan (Draft Plan) Habitats Regulation Assessment Screening (January 2025)

1. Introduction

- 1.1 Lancaster City Council has prepared this screening report to support Scotforth Rural Neighbourhood Plan Working Group in determining whether or not the contents of the proposed Scotforth Rural Neighbourhood Plan are likely to require a Habitats Regulation Assessment (HRA).
- 1.2 Habitats and species of international nature conservation importance have historically been protected by the European Directive (92/43/EEC) on the Conservation of Natural Habitats and Wild Flora and Fauna (The Habitats Directive). This was transposed into British law via the Conservation of Habitats and Species regulations 2017. Following the UK's withdrawal from Europe a number of amendments have been made to the Conservation of Habitats and Species Regulations (2017) to ensure that they remain operable post January 2021. Most of these changes involve transferring functions from the European Commission to the appropriate authorities in England and Wales.
- 1.3 The amended regulations continue to identify a national site network comprising protected sites previously identified as part of the EU's Natura 2000 ecological network. The national site network includes Special Areas of Conservation (SACs), and Special Protection Areas (SPAs). Ramsar sites whilst not included as part of the national site network remain protected in the same way as SACs and SPAs. Government policy statements have been issued making clear that they should be afforded the same level of protection afforded to SPAs and SACs.
- 1.4 Under the Regulations, an assessment is required where a plan or project may give rise to significant effects upon a protected sites.
- 1.5 The overarching aim of HRA is to determine, in view of a site's conservation objectives and qualifying interests, whether a plan or project, either in isolation and/or in combination with other plans would have a significant adverse effect on a European site. If the screening concludes that a significant adverse effect is likely, then Appropriate Assessment must be undertaken to determine whether there will be adverse effects on site integrity.
- 1.6 While there are no designated sites within the proposed neighbourhood boundary, 5 sites are noted to be within a 15km radius of the boundary and could potentially be affected by the Scotforth Rural Neighbourhood Plan. Further information on these designations is provided below.

2. HRA process

- 2.1 The requirements of the Habitats Regulations comprises four distinct stages:

Stage 1: Screening.

This is the stage which initially identifies the likely impacts upon a protected site of a project or plan, either alone or in-combination with other projects or plans, and considers whether these impacts may have a significant effect on the integrity of the site's qualifying habitats and/or species. Where a significant effect is identified the assessment moves onto stage 2.

Stage 2: Appropriate Assessment.

This provides the detailed consideration of the impact on the integrity of the protected site of the project or plan, either alone or in combination with other projects or plans, with respect to the site's conservation objectives and its structure and function. This is to determine whether or not there will be adverse effects on the integrity of the site. This stage also includes the development of mitigation measures to avoid or reduce any potential impacts.

Stage 3: Assessment of alternative solutions.

This examines alternative ways of achieving the objectives of the plan or project that would avoid adverse impacts on the integrity of the protected site, should avoidance or mitigation measures be unable to cancel out adverse effects.

Stage 4: Assessment where no alternative solutions exist and where adverse impacts remain.

In such circumstances it must be demonstrated that the development is necessary for imperative reasons of overriding public interest.

3. Background

- 3.1 Neighbourhood Planning gives local communities the opportunity to prepare planning documents for their area, enabling them to shape the future of where they live and giving them greater ownership of the plans and policies that affect them. Introduced under the Localism Act in 2011 Neighbourhood Plans provide a new tier of planning policy.
- 3.2 Planning policy for the district is established in the Lancaster District Local Plan. This currently consists of policies contained in the adopted Strategic Policies and Land Allocations Development Plan Document (DPD), the Development Management DPD, The Arnsdale and Silverdale Area of Outstanding Natural Beauty (AONB) DPD and the Morecambe Area Action Plan.
- 3.3 The City Council has undertaken a Climate Emergency Partial Review of the Local Plan aimed at strengthening its approach towards adapting to and mitigating against the impacts of Climate Change. This follows the declaration of a Climate Emergency by the City Council in January 2024. The Partial Review of the Local Plan has recently been found sound by an independent Planning Inspector and will shortly be adopted by the City Council. On adoption the policies will replace those currently contained within the current Local Plan.
- 3.4 Whilst only just completing the partial review the City Council has made the decision to undertake a full review of the Local Plan. The full review will cover all policy areas and will revisit issues including housing, employment, design, climate change and the natural environment. Initial scoping work has been undertaken and further consultation on issues and potential options is scheduled to take place early in 2025.
- 3.5 The Neighbourhood plan area for Scotforth Rural was formally designated on the 27th January 2023. This confirmed the commitment to preparing a Neighbourhood Plan and identified the proposed Neighbourhood Plan area.

3.6 The Scotforth Rural Neighbourhood Plan Working Group have prepared a Draft Neighbourhood Plan Document (December 2024)). Lancaster City Council have used this information to undertake initial HRA screening of the Neighbourhood Plan.

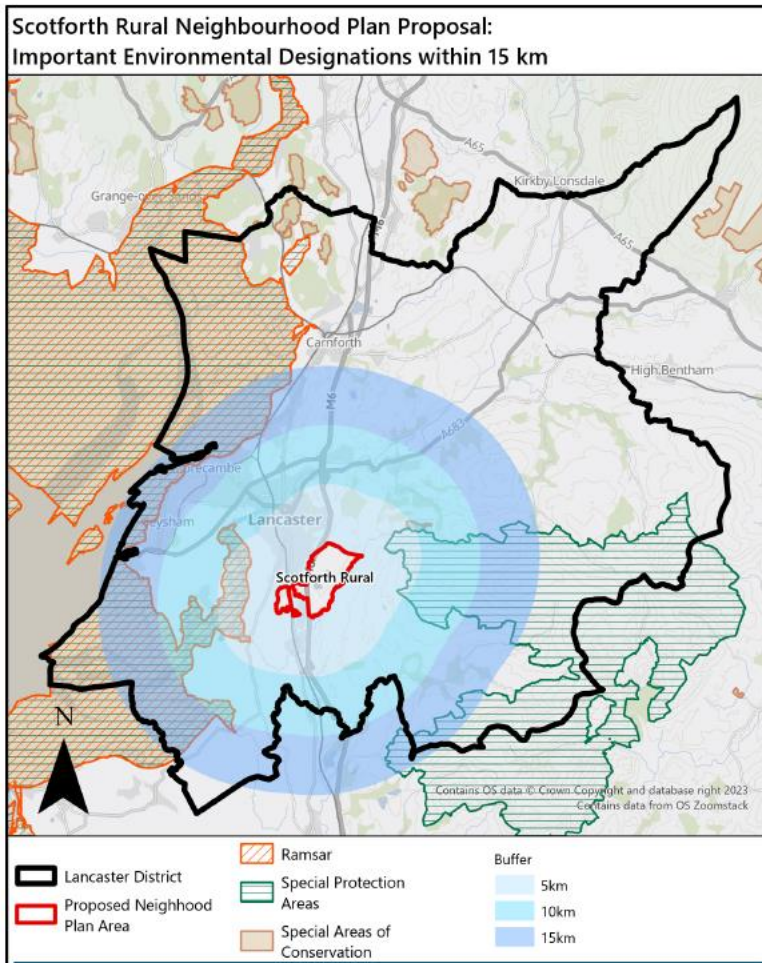
4. Relevant Protected Sites

4.1 There are a number of designated sites that could potentially be affected by the Scotforth and Rural Neighbourhood Plan. This includes European sites which whilst outside of the boundary could potentially be affected by the Neighbourhood Plan. As a general rule of thumb best practice indicates that sites with pathways of 10-15km of the plan/project should be included within a HRA.

Table 1 – Summary of European Sites

Site Name	Identification Number
Special Protection Areas	
Bowland Fells	UK9005151
Morecambe Bay and Duddon Estuary	UK9020326
Special Area of Conservation	
Morecambe Bay	UK0013027
Calf Hill and Cragg Woods	UK0030106
RAMSAR sites	
Morecambe Bay	UK11045

Figure 1 – International and national environmental designations within 15km of Scotforth Rural Neighbourhood Plan Boundary



4.2 Further details on the description and character of the designated sites is provided below (appendix 1). The conservation of objections for the designations are also provided in appendix 2. This information was obtained from Natural England’s website and also informed by the wider Local Plan HRA assessment.

5. HRA Screening

- 5.1 The proximity of designated sites within 15km indicate that there could be potential for the plan, depending on its content, to have a significant adverse effect on a designated site.
- 5.2 The draft Neighbourhood Plan has been screened for likely significant effects on European sites. During the HRA screening stage, the likely nature, magnitude, frequency, timing, duration, location and spatial extent of changes resulting from implementation of the Neighbourhood Plan was assessed. As part of this, mechanisms through which the plan could impact upon Designated sites were considered.
- 5.3 The main impact pathways could be:
- Physical loss of habitat/damage to habitat
 - Non-physical disturbance
 - Recreational pressure
 - Contamination
 - Biological disturbance

- Loss of functionally linked land
- Changes in water quality

5.4 The conclusions of the initial assessment are described in table 2 below.

5.5 Policies that were screened out were generally those that could not lead to a direct pathway to any of the identified designated sites. These were generally policies that looked to protect historic assets, protect landscape character and the design of new development.

Table 2 – Initial screening assessment									
Designated Site	Policy								
	SR1	SR2	SR3	SR4	SR5	SR6	SR7	SR8	SR9
Bowland Fells SPA	Y	Y	N	N	N	N	N	N	Y
Morecambe Bay and Duddon Estuary SPA	Y	Y	N	N	N	N	N	N	Y
Calf Hill and Craggs Wood SAC	Y	Y	N	N	N	N	N	N	Y
Morecambe Bay SAC	Y	Y	N	N	N	N	N	N	Y
Morecambe Bay Ramsar	Y	Y	N	N	N	N	N	N	Y

- 5.6 Unlikely effects on the Morecambe Bay and Duddon Estuary SPA, Morecambe Bay SAC, Morecambe Bay Ramsar, Calf Hill and Craggs Wood SAC and Bowland Fells SPA cannot be ruled out at this stage.
- 5.7 Initial screening identified two policies that cannot be ruled out at this stage:
- Policy SR1 'Bailrigg Village Area of Separation and Development Boundary'
 - Policy SR2 'Small Scale Development in Burrow Heights and Lower Burrow Local Character Area'
 - Policy SR9 'Walking, Cycling and Horse-Riding'
- 5.9 A more detailed assessed of the screened in policies is provided in table 3.

Table 3 – Detailed screening of policies

Neighbourhood Plan Policy	Designated Site Potentially affected	Development and Land Use Change and Potential Effects	Avoidance Potential	Recommendation/Conclusion
Policy SR1 'Bailrigg Village Area of Separation and Development Boundary'	Bowland Fells Morecambe Bay and Duddon Estuary Morecambe Bay Calf Hill and Cragg Woods Morecambe Bay	<p>Policy SR1 supports limited development within the development boundary for Bailrigg Village. Such development will need to clearly demonstrate it meets evidenced local needs, is proportionate in scale and character and can be accommodated by existing or proposed improvements to infrastructure and services.</p> <p>New development has the potential to impact on the designated sites through loss of habitat, disturbance to species as a result of construction activities/operational stage, recreational pressure and changes in water quality where there are hydrological links to the Designated Site.</p>	<p>Policy SR5 'Wildlife and Biodiversity' contains wording that states that proposals will only be permitted if it can be concluded that the proposal either alone or in combination with other plans or projects will not adversely affect the integrity of any European designated sites.</p> <p>This policy together with other policies within the District Local Plan should ensure appropriate safeguards are in place for the protection of Designated Sites.</p>	Policy SR5 together with higher level policies mean that no likely significant effects on designated sites are predicted as a result of the implementation of this policy.
Policy SR2 'Small Scale Development in Burrow Heights and Lower Burrow Local Character Area'	Bowland Fells Morecambe Bay and Duddon Estuary Morecambe Bay Calf Hill and Cragg Woods	Policy SR2 supports limited new development in the Burrow Heights and Lower Burrow Landscape Character Area where it clearly demonstrates that it meets an evidenced local need and where it comprises small scale infill and rounding off and where it respects the	Policy SR5 'Wildlife and Biodiversity' contains wording that states that proposals will only be permitted if it can be concluded that the proposal either alone or in combination with other plans or projects will not adversely affect the integrity of any European designated sites.	Policy SR5 together with higher level policies mean that no likely significant effects on designated sites are predicted as a result of the implementation of this policy.

	Morecambe Bay	<p>setting and form of existing traditional buildings.</p> <p>New development has the potential to impact on the designated sites through loss of habitat, disturbance to species as a result of construction activities/operational stage, recreational pressure and changes in water quality where there are hydrological links to the Designated Site.</p>	<p>This policy together with other policies within the District Local Plan should ensure appropriate safeguards are in place for the protection of Designated Sites.</p>	
Policy SR9 'Walking, Cycling and Horse Riding'	Bowland Fells Morecambe Bay and Duddon Estuary Morecambe Bay Calf Hill and Cragg Woods Morecambe Bay	<p>The policy sets out aspirations for improvements to the active travel network in the area.</p> <p>Development has the potential to impact on the designated sites through increases in recreational pressure caused by increased access.</p>	<p>Policy SR5 'Wildlife and Biodiversity' contains wording that states that proposals will only be permitted if it can be concluded that the proposal either alone or in combination with other plans or projects will not adversely affect the integrity of any European designated sites.</p> <p>This policy together with other policies within the District Local Plan should ensure appropriate safeguards are in place for the protection of Designated Sites.</p>	<p>Policy SR5 together with higher level policies mean that no likely significant effects on designated sites are predicted as a result of the implementation of this policy.</p>

6. Screening Conclusion

- 6.1 The HRA Screening Report of the Scotforth Rural Neighbourhood Plan has considered the potential implications for European designated sites in proximity to the Neighbourhood Plan area boundary.
- 6.2 The document places a strong emphasis on the protection of the area's heritage and natural assets. No allocations are proposed within the document and only very limited growth with high environmental and design standards are proposed.
- 6.3 This together with the presence of higher-level policies within the Local Plan has meant that the Council has concluded that the Neighbourhood Plan is unlikely to have a likely significant effect on designated sites either alone, or in-combination with other plans or projects.
- 6.4 The three statutory bodies have confirmed this conclusion.

Appendix 1 - Description and character of identified European Sites

Site Name	Qualifying Features		Current Conditions and Threats	Results of SSSI Condition Survey
	Habitats	Species		
Morecambe Bay Ramsar site	N/A	<ul style="list-style-type: none"> • Ramsar criterion 4: The site is a staging area for migratory waterfowl including internationally important numbers of passage ringed plover <i>Charadrius hiaticula</i>. • Ramsar criterion 5 Assemblages of international importance with peak counts in the winter: 223709 waterfowl • Ramsar criterion 6 Species/populations occurring at levels of international importance during the breeding season: Lesser black-backed gull , <i>Larus fuscus graellsii</i> Herring gull, <i>Larus argentatus argentatus</i> Sandwich tern, <i>Sterna (Thalasseus) sandvicensis sandvicensis</i> Species with peak counts in spring/autumn: Great cormorant, <i>Phalacrocorax carbo carbo</i> Common shelduck , <i>Tadorna tadorna</i> Northern pintail, <i>Anas acuta</i> Common eider, <i>Somateria mollissima mollissima</i> Eurasian oystercatcher, <i>Haematopus ostralegus ostralegus</i> Ringed plover, <i>Charadrius hiaticula</i> 	No factors reported adversely affecting the sites ecological character (past, present or potential).	<p>Area favourable 94.31%</p> <p>Area unfavourable but recovering 5.69%</p> <p>Area unfavourable no change 0%</p> <p>Area unfavourable declining 0%</p> <p>Area destroyed / part destroyed 0%</p>

		<p>Grey plover, <i>Pluvialis squatarola</i> Sanderling, <i>Calidris alba</i> Eurasian curlew, <i>Numenius arquata</i> <i>arquata</i> Common redshank, <i>Tringa totanus</i> <i>totanus</i> Ruddy turnstone, <i>Arenaria interpres</i> <i>interpres</i> Lesser black-backed gull, <i>Larus fuscus</i> <i>graellsii</i> Species with peak counts in winter: Great crested grebe, <i>Podiceps</i> <i>cristatus cristatus</i> Pink-footed goose, <i>Anser</i> <i>brachyrhynchus</i> Eurasian wigeon, <i>Anas penelope</i> Common goldeneye, <i>Bucephala</i> <i>clangula clangula</i> Red-breasted merganser, <i>Mergus</i> <i>serrator</i> European golden plover, <i>Pluvialis</i> <i>apricaria apricaria</i> Northern lapwing, <i>Vanellus vanellus</i> Red knot, <i>Calidris canutus islandica</i> Dunlin, <i>Calidris alpina alpina</i> Bar-tailed godwit, <i>Limosa lapponica</i> <i>lapponica</i></p>		
Morecambe Bay and Duddon Estuary SPA	N/A	<p>The site qualifies under Article 4.1 of the Directive (79/409/EEC) by supporting populations of European importance of the following species listed on Annex I of the Directive: During the breeding season;</p> <ul style="list-style-type: none"> • Little Tern <i>Sterna albifrons</i> • Sandwich Tern <i>Sterna sandvicensis</i> 	<p>The site is subject to a wide range of pressures such as land-claim for agriculture, overgrazing, dredging, overfishing, industrial uses and unspecified pollution. However, overall the site is relatively robust and</p>	<p>Area favourable 94.31% Area unfavourable but recovering 5.69% Area unfavourable no change 0% Area unfavourable declining 0% Area destroyed / part destroyed 0%</p>

		<p>Over winter;</p> <ul style="list-style-type: none"> • Bar-tailed Godwit <i>Limosa lapponica</i> • Golden Plover <i>Pluvialis apricaria</i> <p>The site also qualifies under Article 4.2 of the Directive (79/409/EEC) by supporting populations of European importance of the following migratory species:</p> <p>During the breeding season;</p> <ul style="list-style-type: none"> • Herring Gull <i>Larus argentatus</i> • Lesser Black-backed Gull <i>Larus fuscus</i> <p>On passage;</p> <ul style="list-style-type: none"> • Ringed Plover <i>Charadrius hiaticula</i> • Sanderling <i>Calidris alba</i> <p>Over winter;</p> <ul style="list-style-type: none"> ☐☐ Curlew <i>Numenius arquata</i> ☐☐ Dunlin <i>Calidris alpina alpina</i> ☐☐ Grey Plover <i>Pluvialis squatarola</i> ☐☐ Knot <i>Calidris canutus</i> ☐☐ Oystercatcher <i>Haematopus ostralegus</i> ☐☐ Pink-footed Goose <i>Anser brachyrhynchus</i> ☐☐ Pintail <i>Anas acuta</i> ☐☐ Redshank <i>Tringa totanus</i> ☐☐ Shelduck <i>Tadorna tadorna</i> ☐☐ Turnstone <i>Arenaria interpres</i> <p>The area qualifies under Article 4.2 of the Directive (79/409/EEC) by regularly supporting at least 20,000 seabirds.</p>	<p>many of those pressures have only slight to local effects and are being addressed through Management Plans. The breeding tern interest is very vulnerable and the colony has recently moved to the adjacent Duddon Estuary. Positive management is being secured through management plans for non-governmental organisation reserves, Natural England, Site Management Statements, European Marine Site Management Scheme, and the Morecambe Bay Partnership.</p>	
--	--	--	--	--

		The area qualifies under Article 4.2 of the Directive (79/409/EEC) by regularly supporting at least 20,000 waterfowl.		
Morecambe Bay SAC	<p>Annex I habitats that are a primary reason for selection of this site:</p> <ul style="list-style-type: none"> • Estuaries • Mudflats and sandflats not covered by seawater at low tide • Large shallow inlets and bays • Perennial vegetation of stony banks • Salicornia and other annuals colonising mud and sand • Atlantic salt meadows (<i>Glauco-Puccinellietalia maritimae</i>) • Shifting dunes along the shoreline with <i>Ammophila arenaria</i> ('white dunes') • Fixed dunes with herbaceous vegetation ('grey 	<p>Annex II species that are a primary reason for selection of this site:</p> <ul style="list-style-type: none"> • Great crested newt <i>Triturus cristatus</i> 	<p>There are a wide range of pressures on Morecambe Bay but the site is relatively robust and many of these pressures have only slight or local effects on its interests. The interests depend largely upon the coastal processes operating within the Bay, which have been affected historically by human activities including coastal protection and flood defence works. Current pressures include fisheries, aggregate extraction, gas exploration, recreation and other activities.</p>	<p>Area favourable 94.31% Area unfavourable but recovering 5.69% Area unfavourable no change 0% Area unfavourable declining 0% Area destroyed / part destroyed 0%</p>

	<p>dunes`)*Priority feature</p> <ul style="list-style-type: none"> • Humid dune slacks <p>Annex I habitats present as a qualifying feature, but not a primary reason for selection of this site:</p> <ul style="list-style-type: none"> • Sandbanks which are slightly covered by sea water all the time • Coastal lagoons *Priority feature • Reefs • Embryonic shifting dunes • Atlantic decalcified fixed dunes (<i>Calluno-Ulicetea</i>) *Priority feature • Dunes with <i>Salix repens</i> ssp. <i>argentea</i> (<i>Salicion arenariae</i>) 			
Bowland Fells SPA	N/A	<p>This site qualifies under Article 4.1 of the Directive (79/409/EEC) by supporting populations of European importance of the following species listed on Annex I of the Directive:</p> <p>During the breeding season;</p> <ul style="list-style-type: none"> _ Hen Harrier <i>Circus cyaneus</i> _ Merlin <i>Falco columbarius</i> 	<p>The expansive blanket bog and heather dominated moorland provides suitable habitat for a diverse range of upland breeding birds. Favourable nature</p>	<p>Area favourable 5.29% Area unfavourable but recovering 85.39% Area unfavourable no change 0% Area unfavourable declining 14.61% Area destroyed / part destroyed 0%</p>

		<p>This site also qualifies under Article 4.2 of the Directive (79/409/EEC) by supporting populations of European importance of the following migratory species:</p> <p>During the breeding season;</p> <p>_ Lesser Black-backed Gull <i>Larus fuscus</i></p>	<p>conservation status of the site depends on appropriate levels of sheep grazing, sympathetic moorland burning practice, sensitive water catchment land management practices and ongoing species protection. Since designation as an SPA, many localised problems of over-grazing have been controlled through management agreements or the Countryside Stewardship Scheme. To date approximately 20% of SPA is under Section 15 management agreements and Countryside Stewardship to stimulate heather regeneration in order to produce better moorland for grouse and raptors alike. Burning plans and stocking levels have also been agreed for all other areas of the SPA through Site Management Statements, whilst problems of raptor persecution continues to be addressed by the RSPB in conjunction with North</p>	
--	--	--	--	--

			West Water, Natural England and Lancashire Constabulary.	
Calf Hill and Cragg Woods SAC	<p>Annex I habitats that are a primary reason for selection of this site:</p> <ul style="list-style-type: none"> _ Old sessile oak woods with <i>Ilex</i> and <i>Blechnum</i> in the British Isles <p>Annex I habitats present as a qualifying feature, but not a primary reason for selection of this site:</p> <ul style="list-style-type: none"> _ Alluvial forests with <i>Alnus glutinosa</i> and <i>Fraxinus excelsior</i> (<i>Alno-Padion</i>, <i>Alnion incanae</i>, <i>Salicion albae</i>) <p>*Priority feature</p>	N/A	<p>Currently there is limited intervention in landuse/ management terms. There is also no immediate need for woodland management in order to safeguard the interest of the site. However, in the long-term it would be desirable to repair some of the walls/fences at the far eastern most end of Calf Hill Wood in order to control sheep grazing from the adjacent fell. In addition, since the canopy of the oak woodland is fairly dense and natural regeneration is quite limited, it would be desirable over the long-term to instigate small-scale selective fellings/silvicultural thinning, whilst felling a small stand of planted larch/pine (<0.5 ha) and replacing it with oak/birch.</p>	<p>Area favourable 100% Area unfavourable but recovering 0% Area unfavourable no change 0% Area unfavourable declining 0% Area destroyed / part destroyed 0%</p>



European Site Conservation Objectives for Morecambe Bay Special Protection Area and potential Special Protection Area Site Code: UK9005081

With regard to the SPA and pSPA and the individual species and/or assemblage of species for which the site has been or may be classified (the 'Qualifying Features' including the 'Additional Qualifying Features' listed below), and subject to natural change;

Ensure that the integrity of the site is maintained or restored as appropriate, and ensure that the site contributes to achieving the aims of the Wild Birds Directive, by maintaining or restoring;

- The extent and distribution of the habitats of the qualifying features
- The structure and function of the habitats of the qualifying features
- The supporting processes on which the habitats of the qualifying features rely
- The population of each of the qualifying features, and,
- The distribution of the qualifying features within the site.

This document should be read in conjunction with the accompanying Conservation Advice document which provides more detailed advice and information to enable the application and achievement of the Objectives set out above.

Qualifying Features

- A040 *Anser brachyrhynchus*; Pink-footed goose (Non-breeding)
- A048 *Tadorna tadorna*; Common shelduck (Non-breeding)
- A054 *Anas acuta*; Northern pintail (Non-breeding)
- A130 *Haematopus ostralegus*; Eurasian oystercatcher (Non-breeding)
- A137 *Charadrius hiaticula*; Ringed plover (Non-breeding)
- A141 *Pluvialis squatarola*; Grey plover (Non-breeding)
- A143 *Calidris canutus*; Red knot (Non-breeding)
- A149 *Calidris alpina alpina*; Dunlin (Non-breeding)
- A157 *Limosa lapponica*; Bar-tailed godwit (Non-breeding)
- A160 *Numenius arquata*; Eurasian curlew (Non-breeding)
- A162 *Tringa totanus*; Common redshank (Non-breeding)

Contd/

A169 *Arenaria interpres*; Ruddy turnstone (Non-breeding)

A191 *Sterna sandvicensis*; Sandwich tern (Breeding)

Waterbird assemblage

Seabird assemblage

Additional Qualifying Features*

A026 *Egretta garzetta*; Little egret (Non-breeding)

A038 *Cygnus cygnus*; Whooper swan (Non-breeding)

A140 *Pluvialis apricaria*; European golden plover (Non-breeding)

A144 *Calidris alba*; Sanderling (Non-breeding)

A151 *Philomachus pugnax*; Ruff (Non-breeding)

A156 *Limosa limosa islandica*; Black-tailed godwit (Non-breeding)

A176 *Larus melanocephalus*; Mediterranean gull (Non-breeding)

A183 *Larus fuscus*; Lesser black-backed gull (Non-breeding)

A183 *Larus fuscus*; Lesser black-backed gull (Breeding)

A184 *Larus argentatus*; Herring gull (Breeding)

A193 *Sterna hirundo*; Common tern (Breeding)

A195 *Sterna albifrons*; Little tern (Breeding)

*Government has initiated public consultation on the scientific case for the classification of these additional features as part of this Special Protection Area (SPA).

This is a European Marine Site

This SPA is a part of the Morecambe Bay European Marine Site (EMS). These Conservation Objectives should be used in conjunction with the current Conservation Advice document for the EMS. For further details about this please visit the Natural England website at <https://www.gov.uk/government/collections/conservation-advice-packages-for-marine-protected-areas> or contact Natural England's enquiry service at enquiries@naturalengland.org.uk or by phone on 0845 600 3078.

This is a potential Special Protection Area (pSPA)

This is also a site on which Government has initiated public consultation on the scientific case for the classification of additional qualifying features as part of this Special Protection Area (SPA). As a matter of Government policy, potential SPAs and their features are treated as if they are formally classified. The provisions of the Habitats Regulations therefore apply to them (see below).

If classified as a SPA, this site will merge with Duddon Estuary SPA (UK9005031).

Explanatory Notes: European Site Conservation Objectives

These Conservation Objectives are those referred to in the Conservation of Habitats and Species Regulations 2010 (the "Habitats Regulations") and Article 6(3) of the Habitats Directive. They must be considered when a competent authority is required to make a 'Habitats Regulations Assessment' including an Appropriate Assessment, under the relevant parts of this legislation.

These Conservation Objectives and the accompanying Supplementary Advice (where this is available) will also provide a framework to inform the management of the European Site under the provisions of Articles 4(1) and 4(2) of the Wild Birds Directive, and the prevention of deterioration of habitats and significant disturbance of its qualifying features required under Article 6(2) of the Habitats Directive.

These Conservation Objectives are set for each bird feature for a [Special Protection Area \(SPA\)](#). Where the objectives are met, the site will be considered to exhibit a high degree of integrity and to be contributing to achieving the aims of the Wild Birds Directive.

Publication date: 29 January 2016 (Version 4). This document updates and replaces an earlier version dated 7 August 2015 in order to include the additional qualifying features ('pSPA features') listed above.



European Site Conservation Objectives for Morecambe Bay Special Area of Conservation Site Code: UK0013027

With regard to the SAC and the natural habitats and/or species for which the site has been designated (the 'Qualifying Features' listed below), and subject to natural change;

Ensure that the integrity of the site is maintained or restored as appropriate, and ensure that the site contributes to achieving the Favourable Conservation Status of its Qualifying Features, by maintaining or restoring;

- The extent and distribution of qualifying natural habitats and habitats of qualifying species
- The structure and function (including typical species) of qualifying natural habitats
- The structure and function of the habitats of qualifying species
- The supporting processes on which qualifying natural habitats and the habitats of qualifying species rely
- The populations of qualifying species, and,
- The distribution of qualifying species within the site.

This document should be read in conjunction with the accompanying *Supplementary Advice* document, which provides more detailed advice and information to enable the application and achievement of the Objectives set out above.

Qualifying Features:

H1110. Sandbanks which are slightly covered by sea water all the time; Subtidal sandbanks

H1130. Estuaries

H1140. Mudflats and sandflats not covered by seawater at low tide; Intertidal mudflats and sandflats

H1150. Coastal lagoons*

H1160. Large shallow inlets and bays

H1170. Reefs

H1220. Perennial vegetation of stony banks; Coastal shingle vegetation outside the reach of waves

H1310. *Salicornia* and other annuals colonising mud and sand; Glasswort and other annuals colonising mud and sand

H1330. Atlantic salt meadows (*Glauco-Puccinellietalia maritimae*)

H2110. Embryonic shifting dunes

H2120. Shifting dunes along the shoreline with *Ammophila arenaria* ("white dunes"); Shifting dunes with marram
H2130. Fixed dunes with herbaceous vegetation ("grey dunes"); Dune grassland*
H2150. Atlantic decalcified fixed dunes (*Calluno-Ulicetea*); Coastal dune heathland*
H2170. Dunes with *Salix repens* ssp. *argentea* (*Salicion arenariae*); Dunes with creeping willow
H2190. Humid dune slacks
S1166. *Triturus cristatus*; Great crested newt

* denotes a priority natural habitat or species (supporting explanatory text on following page)

This is a European Marine Site

This site is a part of the Morecambe Bay European Marine Site. These conservation objectives should be used in conjunction with the Regulation 35 Conservation Advice Package, for further details please contact Natural England's enquiry service at enquiries@naturalengland.org.uk, or by phone on 0845 600 3078, or visit the Natural England website at: <http://www.naturalengland.org.uk/ourwork/marine/protectandmanage/mpa/europeansites.aspx>

* Priority natural habitats or species

Some of the natural habitats and species listed in the Habitats Directive and for which SACs have been selected are considered to be particular priorities for conservation at a European scale and are subject to special provisions in the Directive and the Habitats Regulations. These priority natural habitats and species are denoted by an asterisk (*) in Annex I and II of the Directive. The term 'priority' is also used in other contexts, for example with reference to particular habitats or species that are prioritised in UK Biodiversity Action Plans. It is important to note however that these are not necessarily the priority natural habitats or species within the meaning of the Habitats Directive or the Habitats Regulations.

Explanatory Notes: European Site Conservation Objectives

These Conservation Objectives are those referred to in the Conservation of Habitats and Species Regulations 2010 (the "Habitats Regulations") and Article 6(3) of the Habitats Directive. They must be considered when a competent authority is required to make a 'Habitats Regulations Assessment', including an Appropriate Assessment, under the relevant parts of this legislation.

These Conservation Objectives and the accompanying Supplementary Advice (where available) will also provide a framework to inform the measures needed to conserve or restore the European Site and the prevention of deterioration or significant disturbance of its qualifying features as required by the provisions of Article 6(1) and 6(2) of the Directive.

These Conservation Objectives are set for each habitat or species of a [Special Area of Conservation \(SAC\)](#). Where the objectives are met, the site will be considered to exhibit a high degree of integrity and to be contributing to achieving Favourable Conservation Status for that species or habitat type at a UK level. The term 'favourable conservation status' is defined in Article 1 of the Habitats Directive.

Publication date: 30 June 2014 – version 2. This document updates and replaces an earlier version dated 29 May 2012 to reflect Natural England's Strategic Standard on European Site Conservation Objectives 2014.



European Site Conservation Objectives for Bowland Fells Special Protection Area Site Code: UK9005151

With regard to the SPA and the individual species and/or assemblage of species for which the site has been classified (the 'Qualifying Features' listed below), and subject to natural change;

Ensure that the integrity of the site is maintained or restored as appropriate, and ensure that the site contributes to achieving the aims of the Wild Birds Directive, by maintaining or restoring;

- The extent and distribution of the habitats of the qualifying features
- The structure and function of the habitats of the qualifying features
- The supporting processes on which the habitats of the qualifying features rely
- The population of each of the qualifying features, and,
- The distribution of the qualifying features within the site.

This document should be read in conjunction with the accompanying *Supplementary Advice* document, which provides more detailed advice and information to enable the application and achievement of the Objectives set out above.

Qualifying Features:

A082 *Circus cyaneus*; Hen harrier (Breeding)

A098 *Falco columbarius*; Merlin (Breeding)

Explanatory Notes: European Site Conservation Objectives

These Conservation Objectives are those referred to in the Conservation of Habitats and Species Regulations 2010 (the "Habitats Regulations") and Article 6(3) of the Habitats Directive. They must be considered when a competent authority is required to make a 'Habitats Regulations Assessment' including an Appropriate Assessment, under the relevant parts of this legislation.

These Conservation Objectives and the accompanying Supplementary Advice (where this is available) will also provide a framework to inform the management of the European Site under the provisions of Articles 4(1) and 4(2) of the Wild Birds Directive, and the prevention of deterioration of habitats and significant disturbance of its qualifying features required under Article 6(2) of the Habitats Directive.

These Conservation Objectives are set for each bird feature for a [Special Protection Area \(SPA\)](#). Where the objectives are met, the site will be considered to exhibit a high degree of integrity and to be contributing to achieving the aims of the Wild Birds Directive.

Publication date: 30 June 2014 (Version 2). This document updates and replaces an earlier version dated 29 May 2012 to reflect Natural England's Strategic Standard on European Site Conservation Objectives 2014. Previous references to additional features identified in the 2001 UK SPA Review have also been removed.



European Site Conservation Objectives for Calf Hill and Cragg Woods Special Area of Conservation Site code: UK0030106

With regard to the SAC and the natural habitats and/or species for which the site has been designated (the 'Qualifying Features' listed below), and subject to natural change;

Ensure that the integrity of the site is maintained or restored as appropriate, and ensure that the site contributes to achieving the Favourable Conservation Status of its Qualifying Features, by maintaining or restoring;

- The extent and distribution of qualifying natural habitats
- The structure and function (including typical species) of qualifying natural habitats, and
- The supporting processes on which qualifying natural habitats rely

This document should be read in conjunction with the accompanying *Supplementary Advice* document, which provides more detailed advice and information to enable the application and achievement of the Objectives set out above.

Qualifying Features:

H91A0. Old sessile oak woods with *Ilex* and *Blechnum* in the British Isles; Western acidic oak woodland

H91E0. Alluvial forests with *Alnus glutinosa* and *Fraxinus excelsior* (*Alno-Padion*, *Alnion incanae*, *Salicion albae*); Alder woodland on floodplains*

* Priority natural habitats or species

Some of the natural habitats and species listed in the Habitats Directive and for which SACs have been selected are considered to be particular priorities for conservation at a European scale and are subject to special provisions in the Directive and the Habitats Regulations. These priority natural habitats and species are denoted by an asterisk (*) in Annex I and II of the Directive. The term 'priority' is also used in other contexts, for example with reference to particular habitats or species that are prioritised in UK Biodiversity Action Plans. It is important to note however that these are not necessarily the priority natural habitats or species within the meaning of the Habitats Directive or the Habitats Regulations.

Explanatory Notes: European Site Conservation Objectives

These Conservation Objectives are those referred to in the Conservation of Habitats and Species Regulations 2010 (the "Habitats Regulations") and Article 6(3) of the Habitats Directive. They must be considered when a competent authority is required to make a 'Habitats Regulations Assessment', including an Appropriate Assessment, under the relevant parts of this legislation.

These Conservation Objectives and the accompanying Supplementary Advice (where available) will also provide a framework to inform the measures needed to conserve or restore the European Site and the prevention of deterioration or significant disturbance of its qualifying features as required by the provisions of Article 6(1) and 6(2) of the Directive.

These Conservation Objectives are set for each habitat or species of a [Special Area of Conservation \(SAC\)](#). Where the objectives are met, the site will be considered to exhibit a high degree of integrity and to be contributing to achieving Favourable Conservation Status for that species or habitat type at a UK level. The term 'favourable conservation status' is defined in Article 1 of the Habitats Directive.

Publication date: 30 June 2014 (version 2). This document updates and replaces an earlier version dated 29 May 2012 to reflect Natural England's Strategic Standard on European Site Conservation Objectives 2014.