

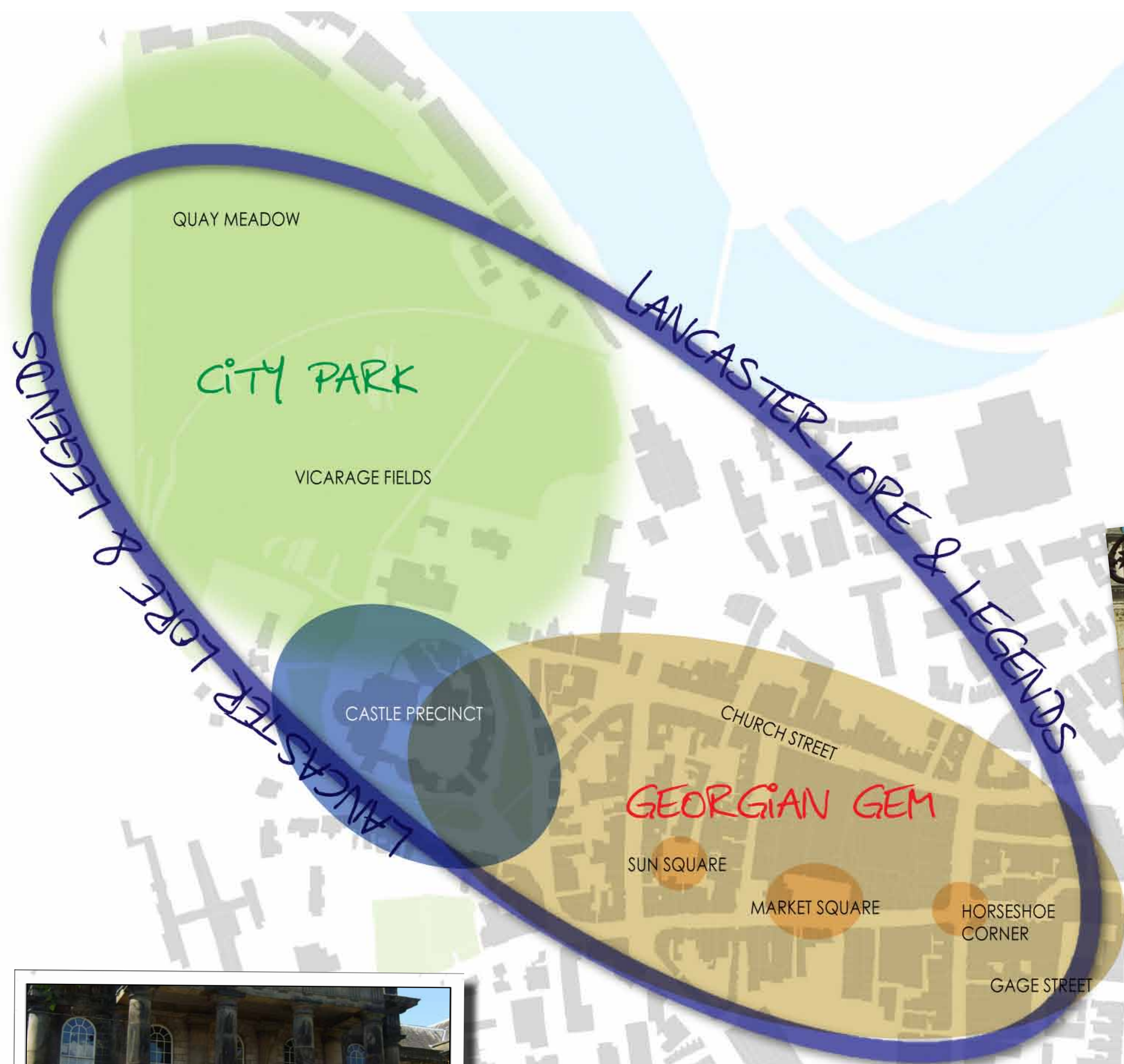
Lancaster Square Routes

Summer 2010



A short history of the Lancaster Square Routes Project

The Northwest Regional Development Agency (NWDA) awarded money to Lancaster City Council in early 2009 to prepare detailed design proposals to upgrade a number of spaces within the city centre, including Market Square, Sun Street and the Castle area. 'Lancaster Square Routes' as the project became known, aims to rejuvenate the important historical city centre of Lancaster, strengthening its position as a quality destination both for visitors and residents of the district. External design consultants Gillespies were appointed to prepare an exciting and innovative vision for the city centre and design options for some of Lancaster's key streets and spaces. Central to the Gillespies' vision for the city were three big ideas....



City Park

Create a new community-led City Park on the site of Vicarage Fields/Quay Meadow. Build upon the city's cycleways, walkways and natural resources to 'green' the city centre and use locally sourced, sustainable materials and ground-breaking new technologies.



Georgian Gem

Enhance the setting of historic buildings and landmarks through high quality public realm with classic, timeless designs that will stand the test of time. Build upon the city's history, heritage & local distinctiveness by using locally sourced materials, traditions and craftsmanship and create spaces that promote cultural activities – art/music/literature, markets, outdoor performance and places for restaurants/cafes and evening activities.

Lancaster Lore & Legends

Embrace Lancaster's rich history and heritage from Roman to Georgian, highwaymen to witches using the new public realm and art commissions to tell the lost tales of Lancaster. Create a city trail that will improve legibility and wayfinding and encourage people to explore the city centre.



Consultation in Market Square Summer 2009



Facebook Consultation Discussion Board



You Tube video and podcast for consultation

An update on progress

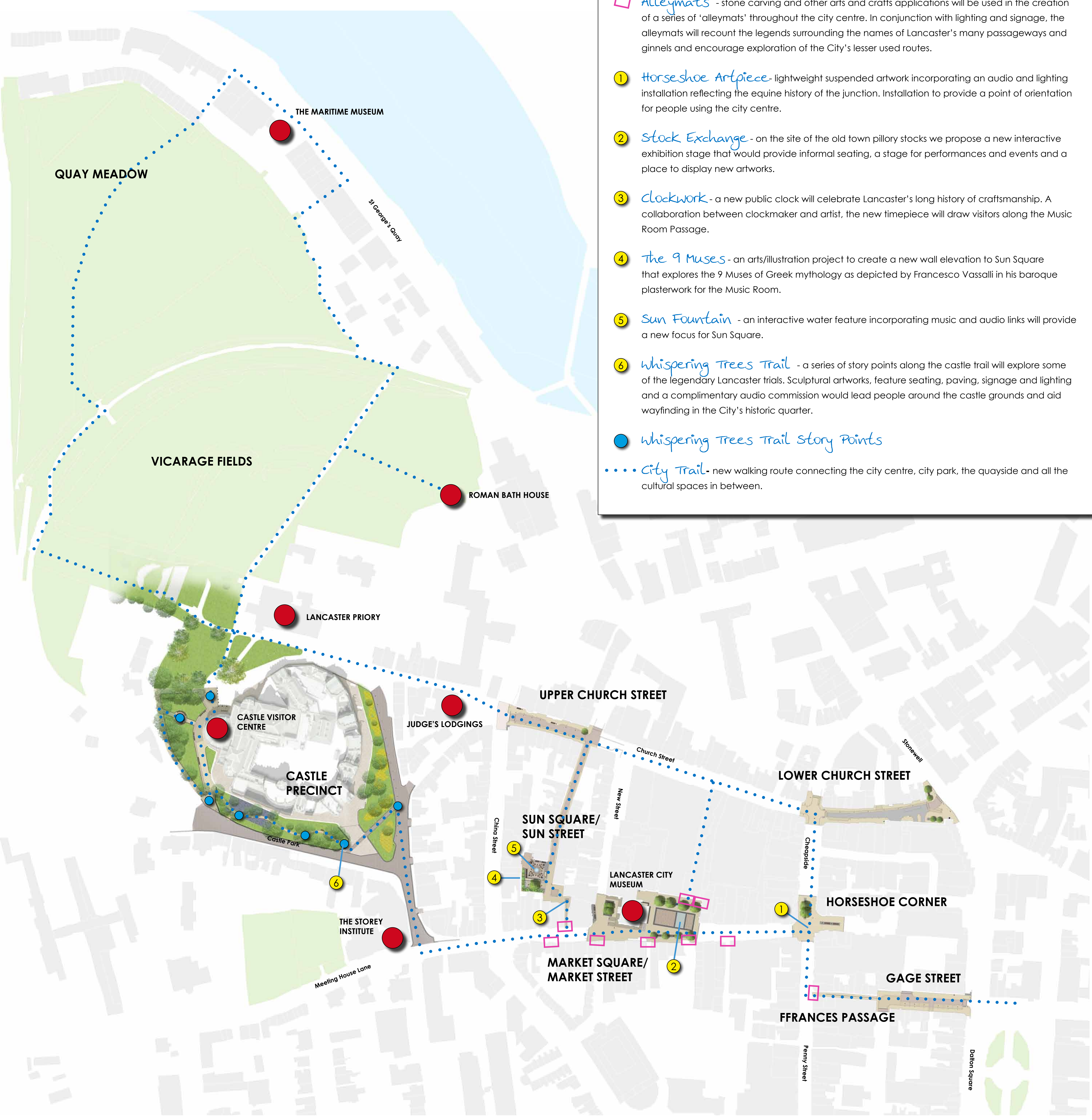
In Summer 2010, the overall vision for the city and concept designs for key streets and spaces were presented to the public via an extensive consultation exercise which included a two week exhibition, facebook discussion group and online podcast and video. Subsequently, the feedback received was reviewed by the design team and a series of detailed design proposals have been produced which it is hoped, will address some of the concerns that arose out of the consultation exercise.

This exhibition sets out these detailed design proposals and the vision for the future of Lancaster's public realm.

What is the vision?

Lancaster Square Routes Public Realm Strategy

The 3 concepts - the Georgian Gem, Lancaster Lore & Legends and the City Park, would inform a new walking trail that connects the city centre, city park, the quayside and all the cultural spaces inbetween. A series of art projects would create a dynamic, locally distinctive public realm, that would make Lancaster an attractive destination for both local people and visitors alike. The highest quality materials and timeless, classic design would enhance the architecture and create a real Georgian Gem. Lancaster's rich history, folklore and legends would be expressed through a series of art projects that lead you around the city and culminate at Lancaster Castle and Vicarage Fields. In addition, the creation of a new City Park would provide a show piece urban green space which extends into the city centre through a series of 'green' art projects.



Art Projects

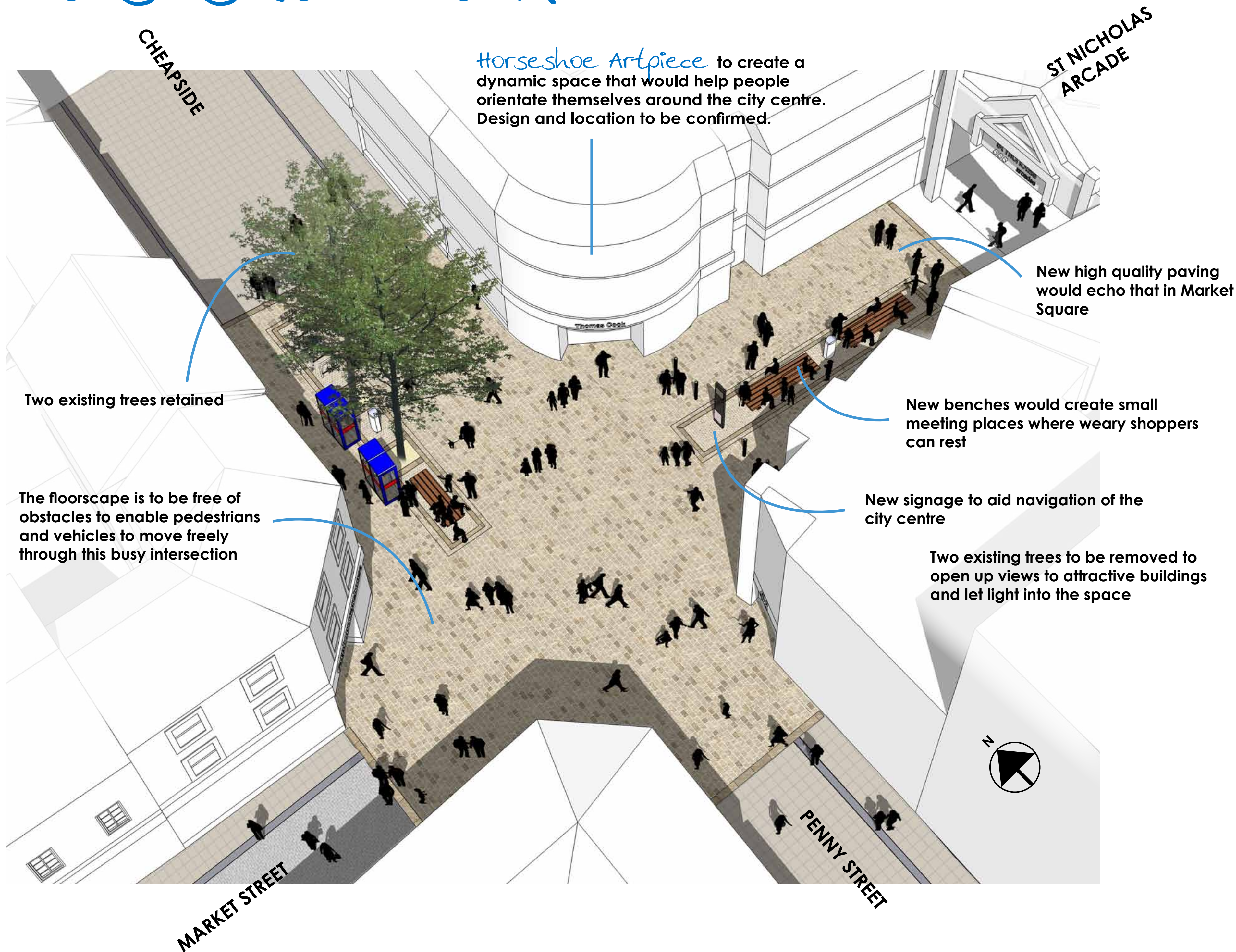
- **information centre** - we aim to establish a link between all the information centres, galleries and museums along the route. We hope this will allow for city wide exhibitions and develop interest in the project.
- **Alleymats** - stone carving and other arts and crafts applications will be used in the creation of a series of 'alleymats' throughout the city centre. In conjunction with lighting and signage, the alleymats will recount the legends surrounding the names of Lancaster's many passageways and ginnels and encourage exploration of the City's lesser used routes.
- ① **Horseshoe Artpiece** - lightweight suspended artwork incorporating an audio and lighting installation reflecting the equine history of the junction. Installation to provide a point of orientation for people using the city centre.
- ② **Stock Exchange** - on the site of the old town pillory stocks we propose a new interactive exhibition stage that would provide informal seating, a stage for performances and events and a place to display new artworks.
- ③ **Clockwork** - a new public clock will celebrate Lancaster's long history of craftsmanship. A collaboration between clockmaker and artist, the new timepiece will draw visitors along the Music Room Passage.
- ④ **The 9 Muses** - an arts/illustration project to create a new wall elevation to Sun Square that explores the 9 Muses of Greek mythology as depicted by Francesco Vassalli in his baroque plasterwork for the Music Room.
- ⑤ **Sun Fountain** - an interactive water feature incorporating music and audio links will provide a new focus for Sun Square.
- ⑥ **Whispering Trees Trail** - a series of story points along the castle trail will explore some of the legendary Lancaster trials. Sculptural artworks, feature seating, paving, signage and lighting and a complimentary audio commission would lead people around the castle grounds and aid wayfinding in the City's historic quarter.
- **Whispering Trees Trail story Points**
- ⋯ **City Trail** - new walking route connecting the city centre, city park, the quayside and all the cultural spaces in between.

Horseshoe Corner & Gage Street/ Ffrances Passage

3

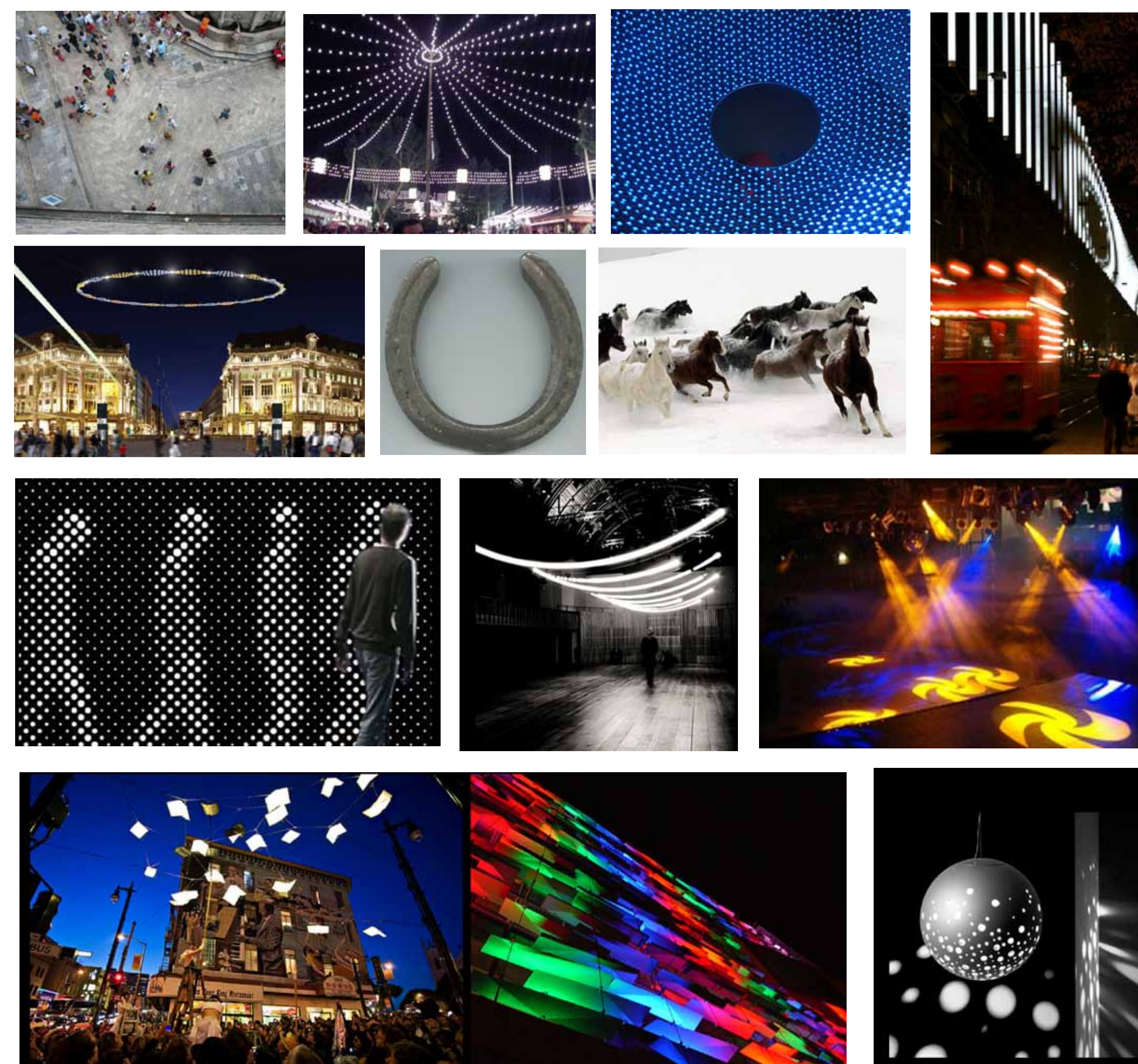
Horseshoe Corner is at the retail heart of Lancaster city centre and is a busy place that people move through and meet friends. At present, street clutter; bins, benches, trees, phone boxes and other items make moving through the space difficult. The new design would create a clear and simple space, free from unnecessary clutter and provide new meeting points out of the way from the busy thoroughfare. A sculptural suspended artwork would float above the street and mark this significant city gateway through the use of light, sound and interactive media. Gage Street and Ffrances Passage would be upgraded to give pedestrian's priority and encourage movement between Dalton Square and the city centre.

Horseshoe Corner

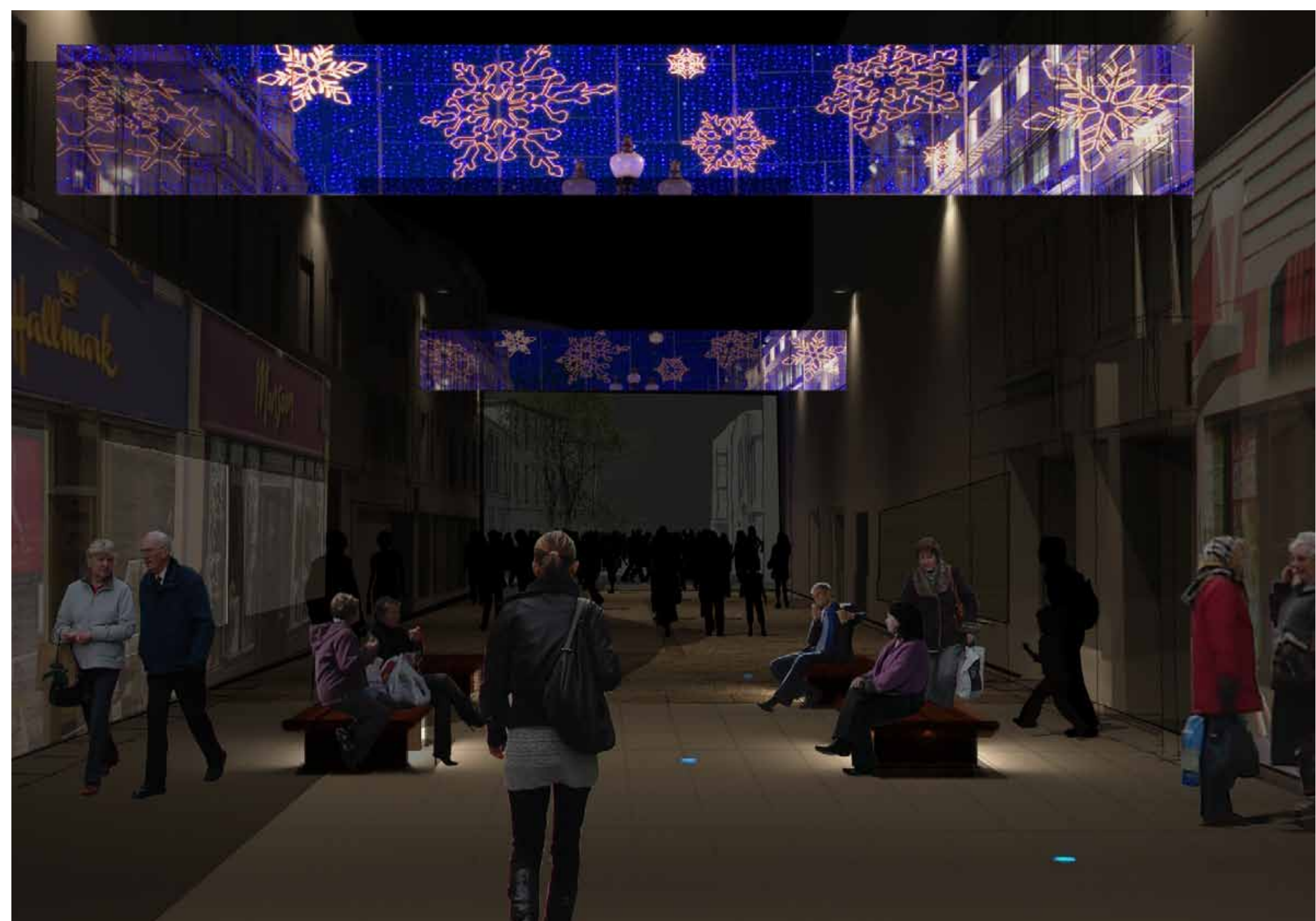


Horseshoe Artpiece

The junction between Cheapside and Market Street, known as Horseshoe Corner is the most important and busiest pedestrian crossroads in Lancaster. The corner is rich with stories of horse auctions and cast shoes of visiting dignitaries, and is always full of shoppers. We propose a new artwork incorporating audio and lighting installations that reflect the equine history of the junction. This could take the form of interactive LED light tubes, a lightweight suspended sculpture, feature pendants and/or floor projection.

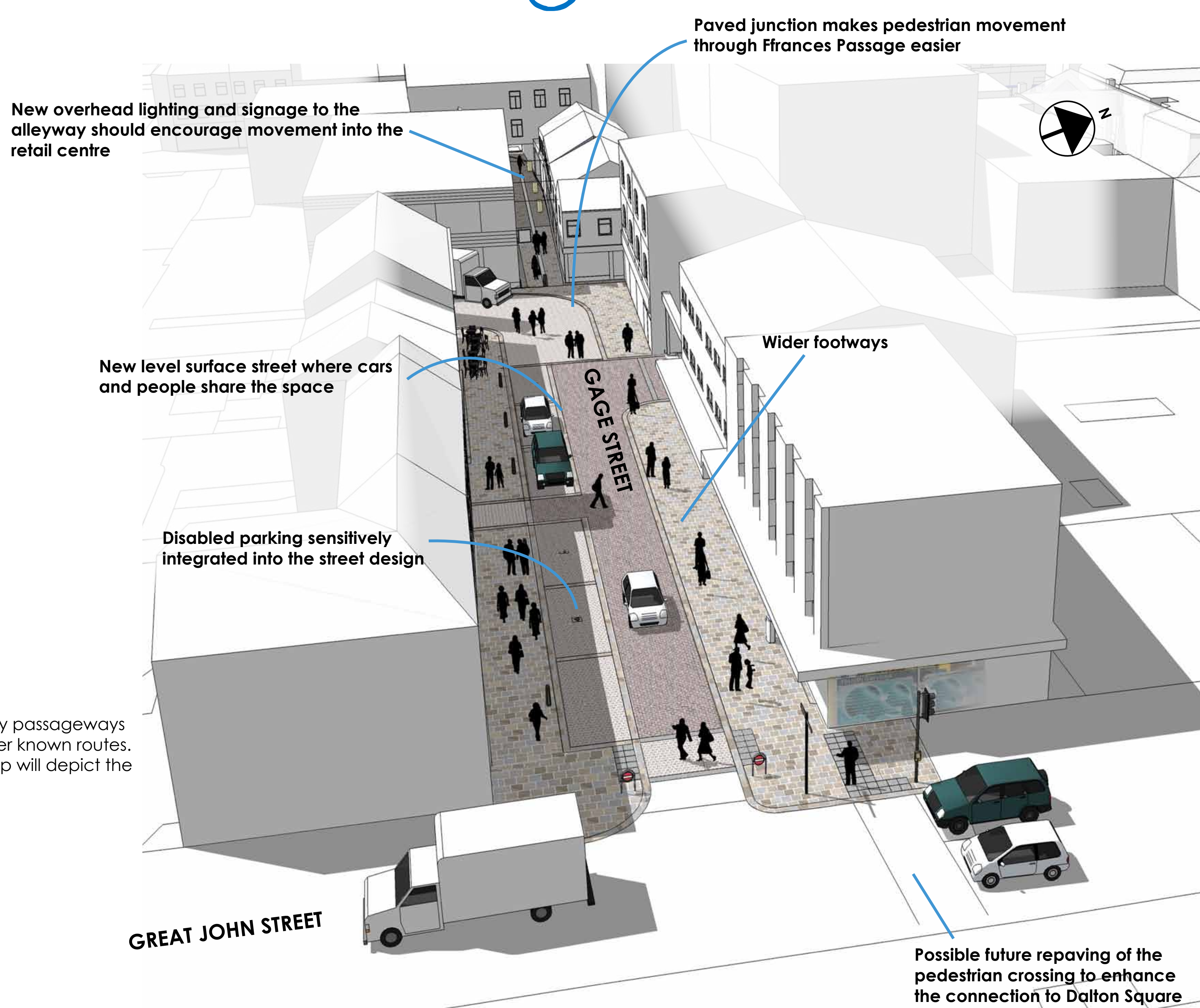


Precedent images



View down Penny Street towards the Horseshoe Canopy and seasonal lighting

Gage Street/ Ffrances Passage



Alleymats

A series of 'alleymats' will mark entrances to the city's key passageways and ginnels encouraging visitors to explore the city's lesser known routes. Stone carving, engraving and other forms of craftsmanship will depict the legends associated with the passageway names.

Alleyways to be included:

- Anchor Lane
- Ffrances Passage
- Slip Inn Lane
- Marketgate
- Music Room Passage
- Chancery Lane
- Golden Ball Lane
- Sir Simon's Arcade
- Bashful Alley

Precedent images

Market Square

4

Market Square is at the heart of Lancaster, accommodating diverse activities and people of all ages. Once the life and soul of the City, a place to trade, gather, meet and celebrate, the square currently lacks a sense of place and purpose. The proposals aim to create a classic, timeless public square of the highest quality which respects the architecture of the surrounding buildings and embraces city life. A typical day in the life of Market Square sees it used by different people for different activities that change daily, monthly and seasonally. The new design would provide a platform for these activities to take place. In order to give Market Square a new sense of identity, an interactive installation on the site of the old pillory stocks will provide informal seating, exhibition space and a stage for performances and city events.



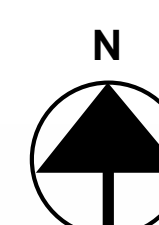
New street lighting extended along Market Street and into New Street

Thin out existing trees. New paved square and benches

Lancaster City Museum to potentially open up to the square at ground floor level

Clear clutter from Library entrance. Remove existing ramp

Alleymats - Passageways to be highlighted through paved 'alleymats', signage and lighting



A day in the life of Market Square...



Exhibitions



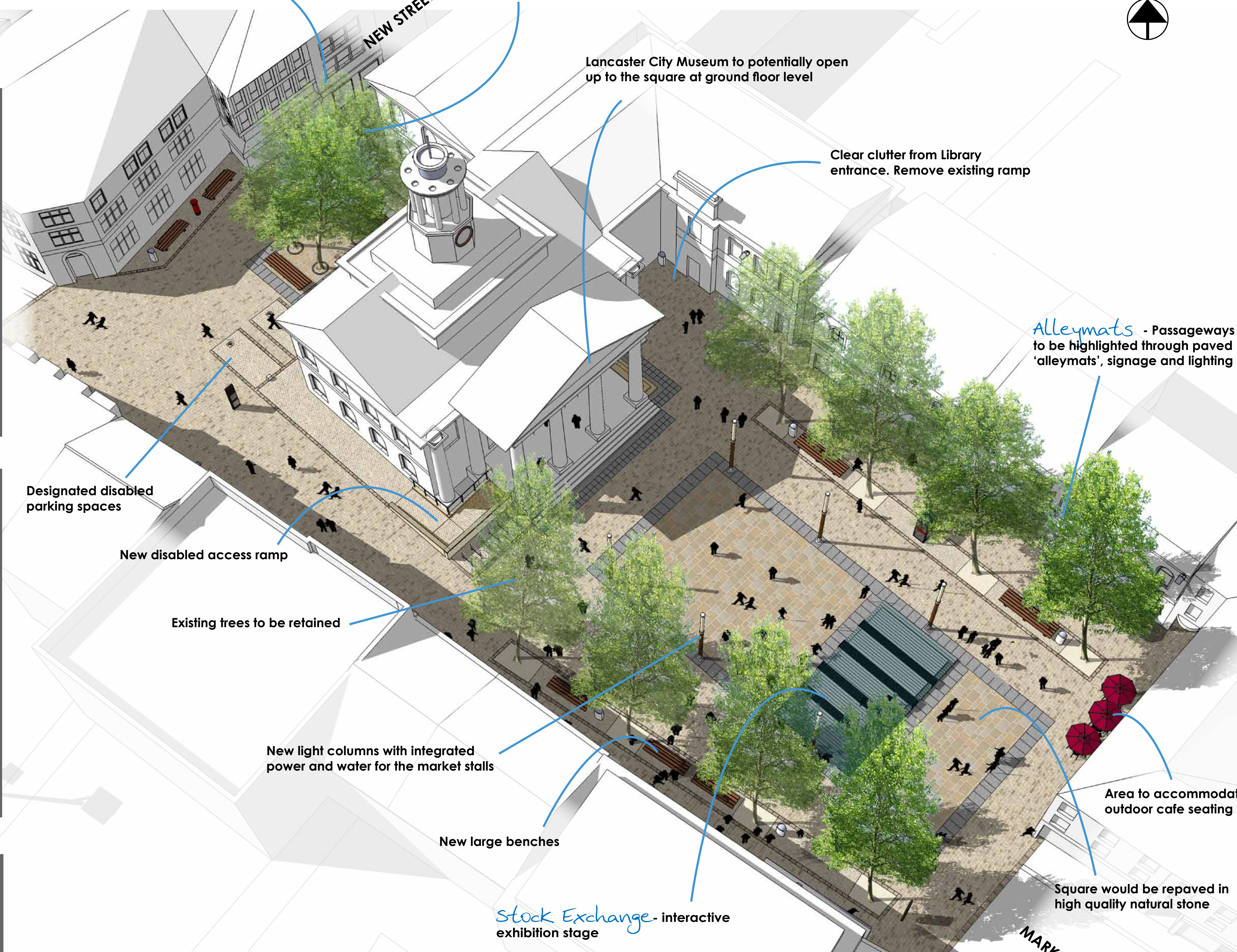
Market Day



Seasonal



City Event



Designated disabled parking spaces

New disabled access ramp

Existing trees to be retained

New light columns with integrated power and water for the market stalls

New large benches

Stock Exchange - interactive exhibition stage

Area to accommodate outdoor cafe seating

Square would be repaved in high quality natural stone



view towards Market Square

Precedent images



Market Square, Market Street & City Illumination

5

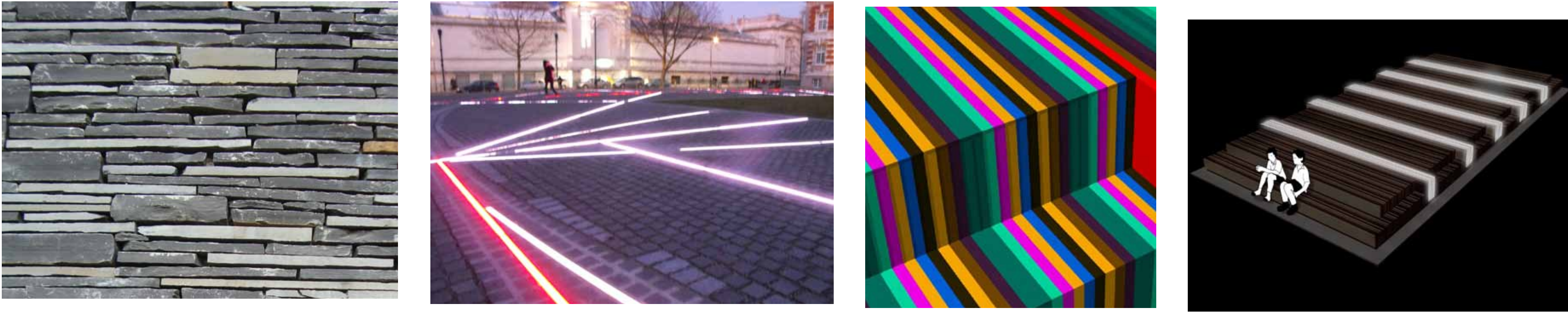
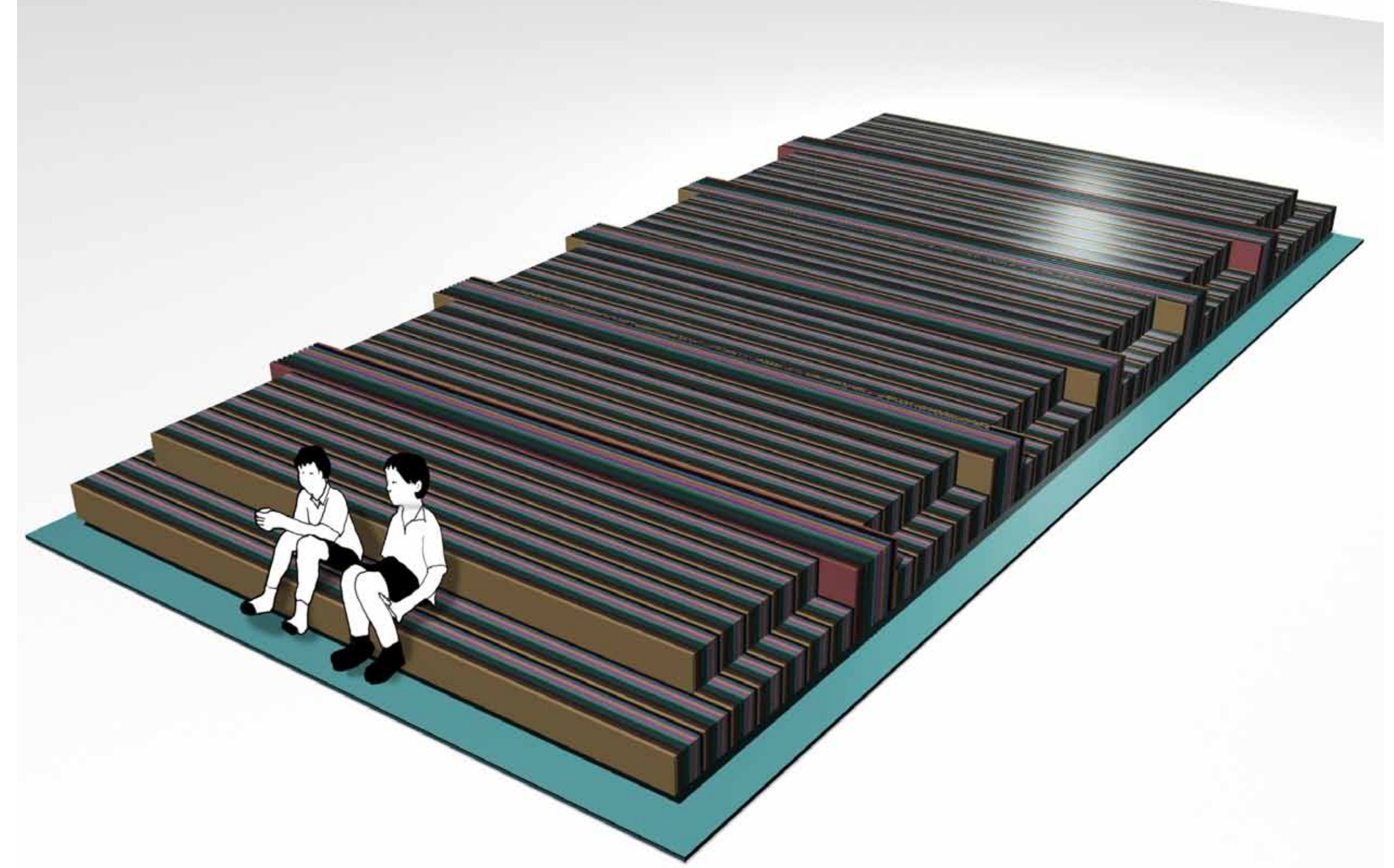
We propose to upgrade street lighting throughout the city centre and create a dynamic evening environment through the feature lighting of buildings, public art and significant landscape elements. The focus for illumination will be Market Square and Market Street terminating in the dramatic new artwork at Horseshoe Corner. The uplighting of key landmark buildings will help to lead visitors around the city centre and animate the city's street and spaces after dark.



The Stock Exchange

Market Square is at the very heart of Lancaster and has played an important role in the development of the City. We feel this space should be a host for events of every possible variety, celebrating trade, art and performance. On the site of the old town pillory stocks, and replacing the existing fountain we propose a new interactive exhibition stage. This would be a display area for new artworks that could be curated by a local arts organisation, creating an outdoor gallery and a stage for city events. When not in use, the platform provides a place for people to gather, to sit and relax at the heart of the square.

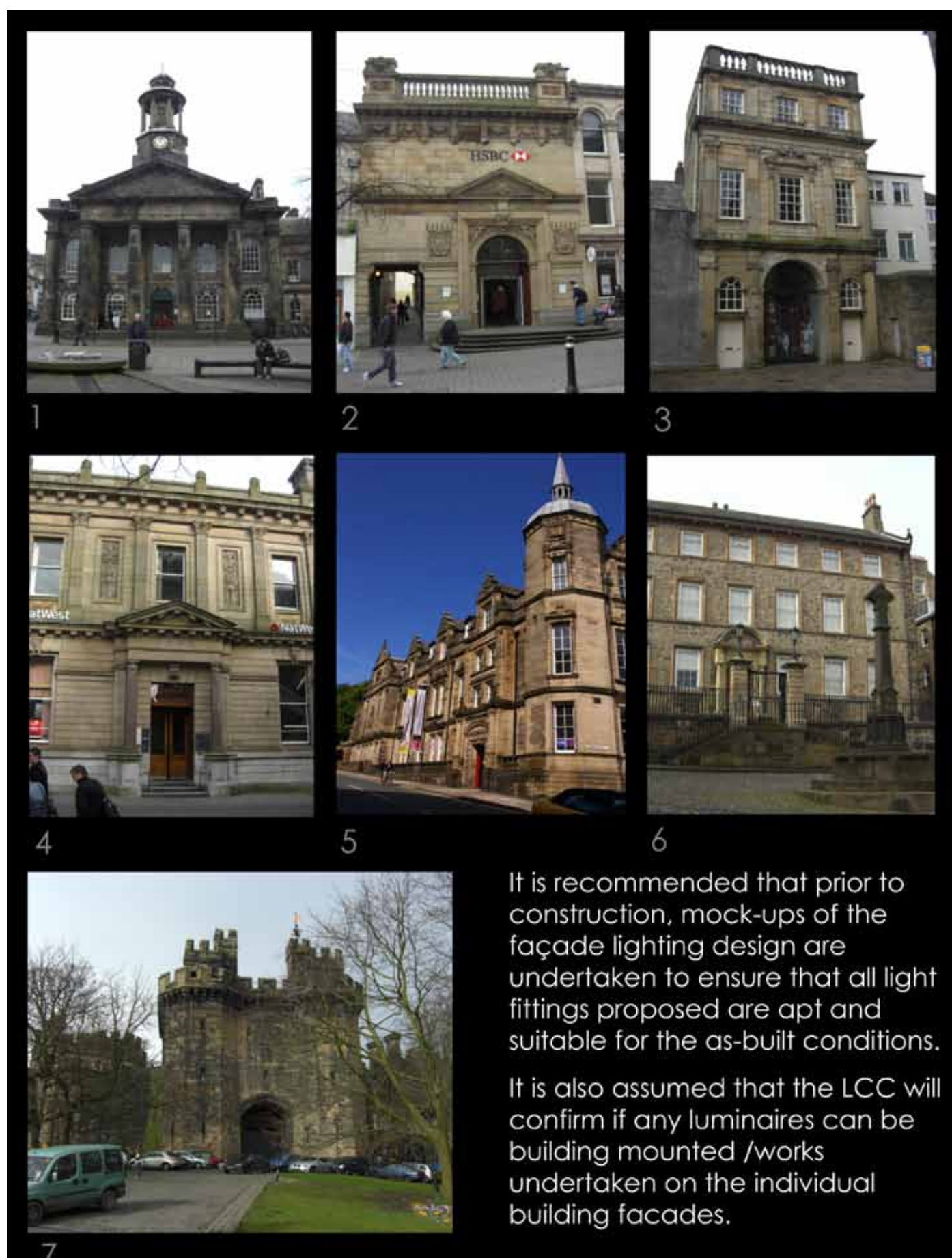
The platform would appear to have been raised from the ground, resembling the earth's strata. The simple solidity of the form gives the piece a quiet confidence and a timeless quality, whilst in its materiality lays hidden secrets. The platform is made up of layers of varying materials that have some relevance to Lancaster, whether they be a local stone, timber cut from a nearby felled tree or a locally manufactured material. Between the lamination are strips of light that respond to activities on or around the piece creating a subtle rippling glow.



Market Square / Market Street illumination

The relighting of Market Square and Market Street is essential to creating a 24 hour public space that feels safe and inviting at all times of the day and night. Proposals would include:

- New building mounted lights to increase brightness and visibility along the street
- Contemporary light columns that will light the square and provide power and water to the market stalls
- Feature lighting to the trees and benches
- Relighting of the alleyways and passages that connect to Market Square
- Dramatic lighting of the City Museum building
- Interactive lighting to the Stock Exchange public art commission
- Seasonal lighting displays along Market Street



City Landmark buildings

Some of the city's key landmark buildings will be dramatically lit as part of the new wayfinding and lighting strategy. Landmark buildings include:

1. City Museum
2. HSBC - Market Street
3. The Music Room
4. Natwest - Church Street
5. The Storey Institute
6. Judges Lodgings
7. John O'Gaunt Gateway - Lancaster Castle

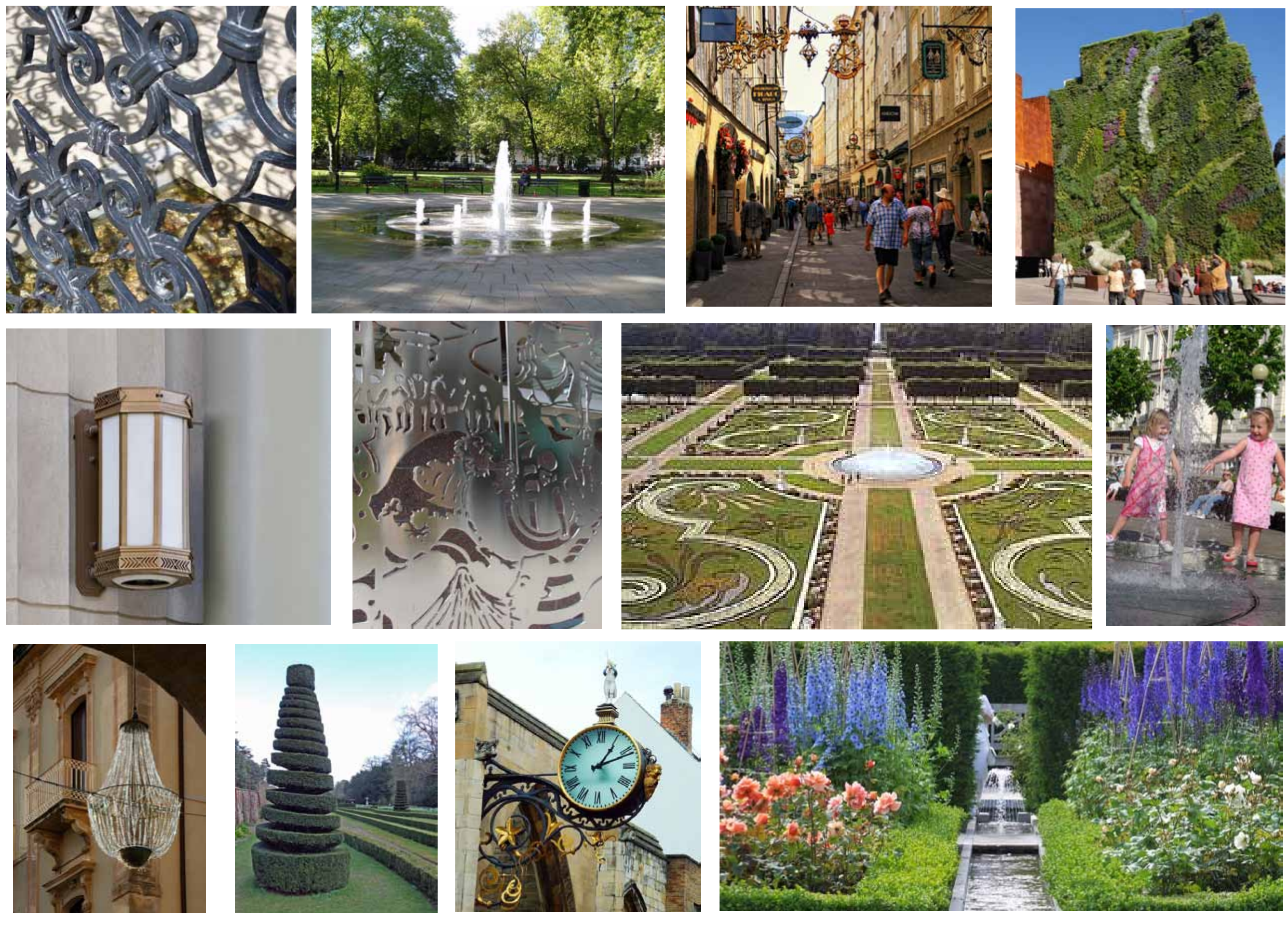
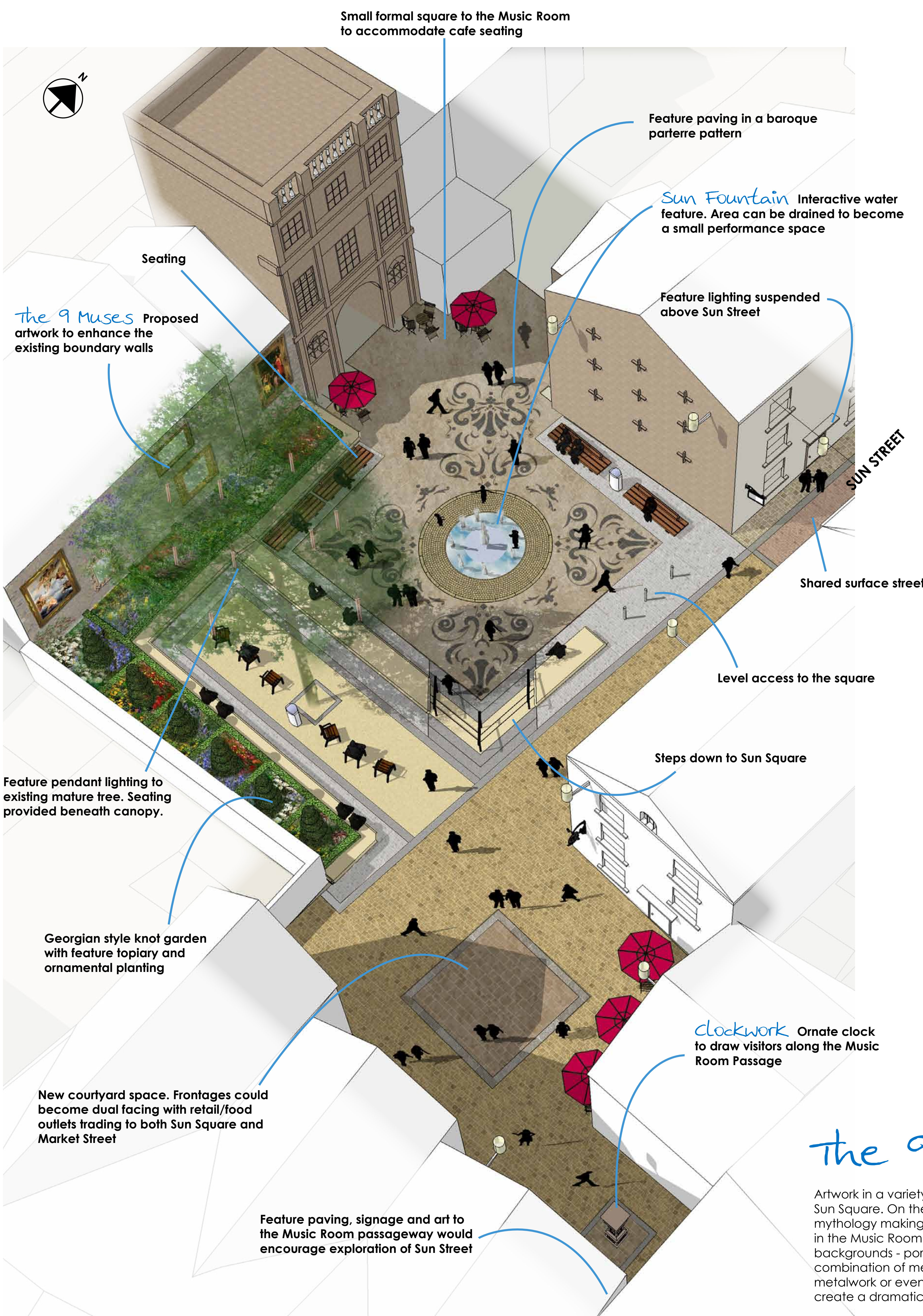


It is recommended that prior to construction, mock-ups of the façade lighting design are undertaken to ensure that all light fittings proposed are apt and suitable for the as-built conditions. It is also assumed that the LCC will confirm if any luminaires can be building mounted / works undertaken on the individual building facades.

Sun Square & Sun Street



Sun Square is a unique space, away from the hustle and bustle of the city, a hidden gem at the heart of the cultural quarter. Today, the square has a neglected feel and buildings have turned their backs to it. Our proposals would see the square embraced as a vibrant garden that creates a magical setting to the Music Room. Ornate planting, water and lighting would create a green oasis that will host small performances and events and be a focus for the city's cultural festivities.



Precedent images



View towards Sun Square

The 9 Muses

Artwork in a variety of mediums will provide a new walled elevation to Sun Square. On the theme of the 9 Muses, the artwork will explore Greek mythology making reference to Francesco Vassalli's baroque plasterwork in the Music Room. It is proposed that artists are drawn from a range of backgrounds - portraiture, photography, graphic artists and illustrators. A combination of medium will be encouraged - laser cut steel, etched glass, metalwork or even textiles and wallpaper. Feature lighting of the walls will create a dramatic evening display.



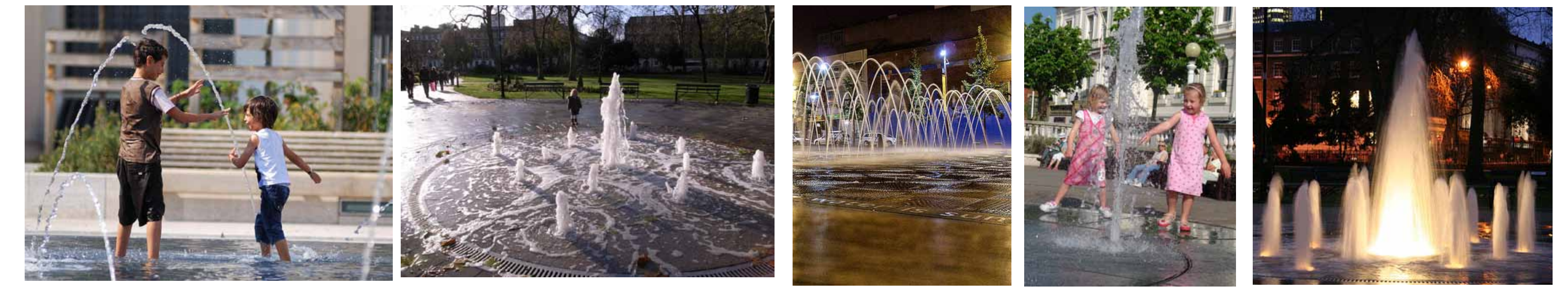
Clockwork

A feature timepiece will act as a focal point drawing visitors along the Music Room Passage. A collaboration between a clockmaker and artist, the artwork will make reference to Lancaster's arts and crafts history. Spotlighting of the timepiece will encourage exploration of Sun Square after dark.



Sun Fountain

Close collaboration between water engineer and artist will create a unique sensory fountain at the heart of Sun Square. The interactive water feature will incorporate musical/audio links and lighting to enhance the garden character of the space. The fountain will be designed to allow the space to become a place for performance when the water is turned off.

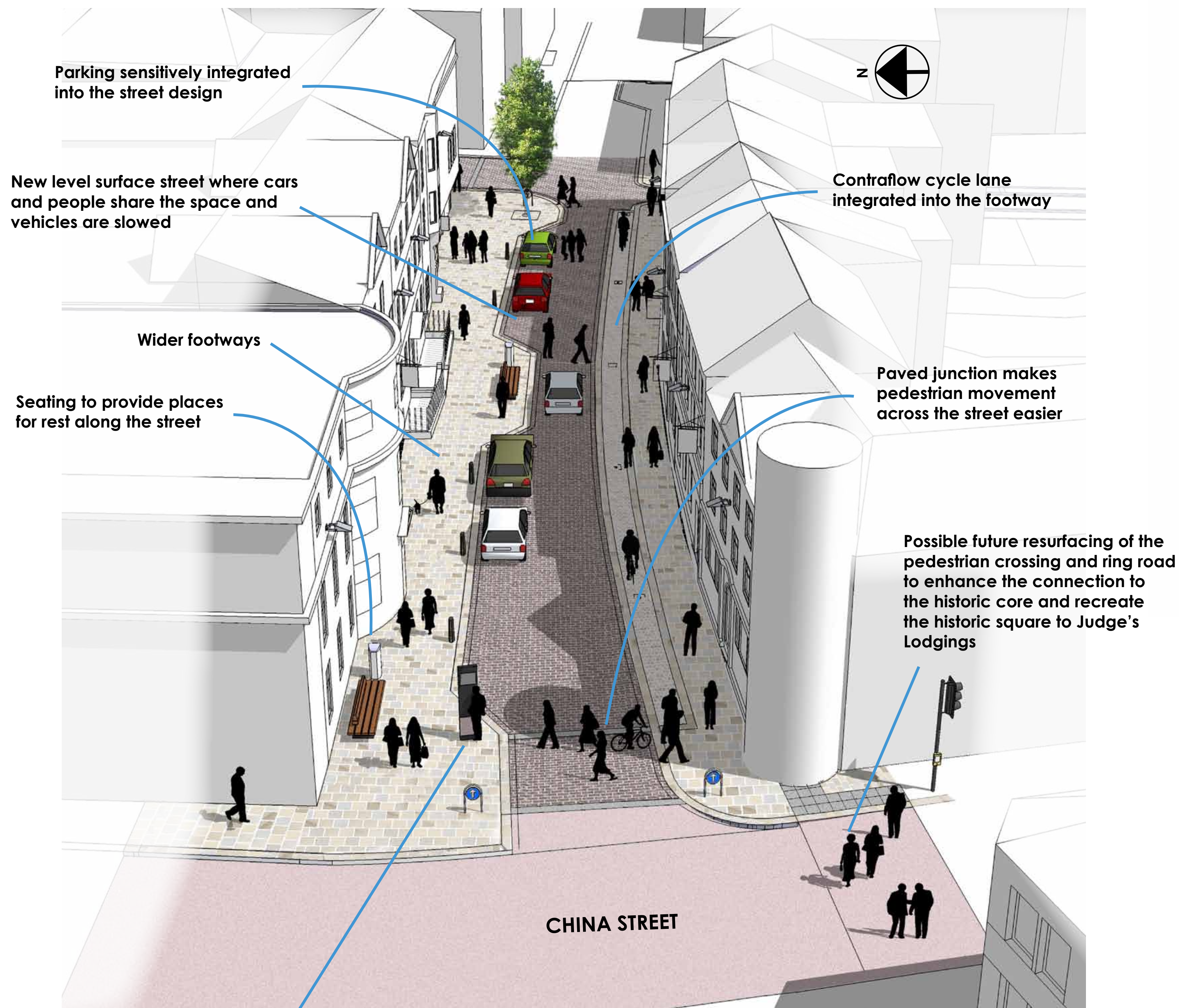


Upper & Lower Church Street

Upper and Lower Church Street are important links which join the retail centre to the historic core and future extended retail area. At present, traffic dominates making the street unpleasant for pedestrians and cyclists. A new high quality public realm aims to rejuvenate the street creating a better setting for the architecture. High quality yorkstone paving and stone sett carriageway would extend the materials from Church Street along the street's length. Integrated cycle lanes, wider footways and new signage should encourage exploration of the city.



upper church street



view towards Judge's Lodgings



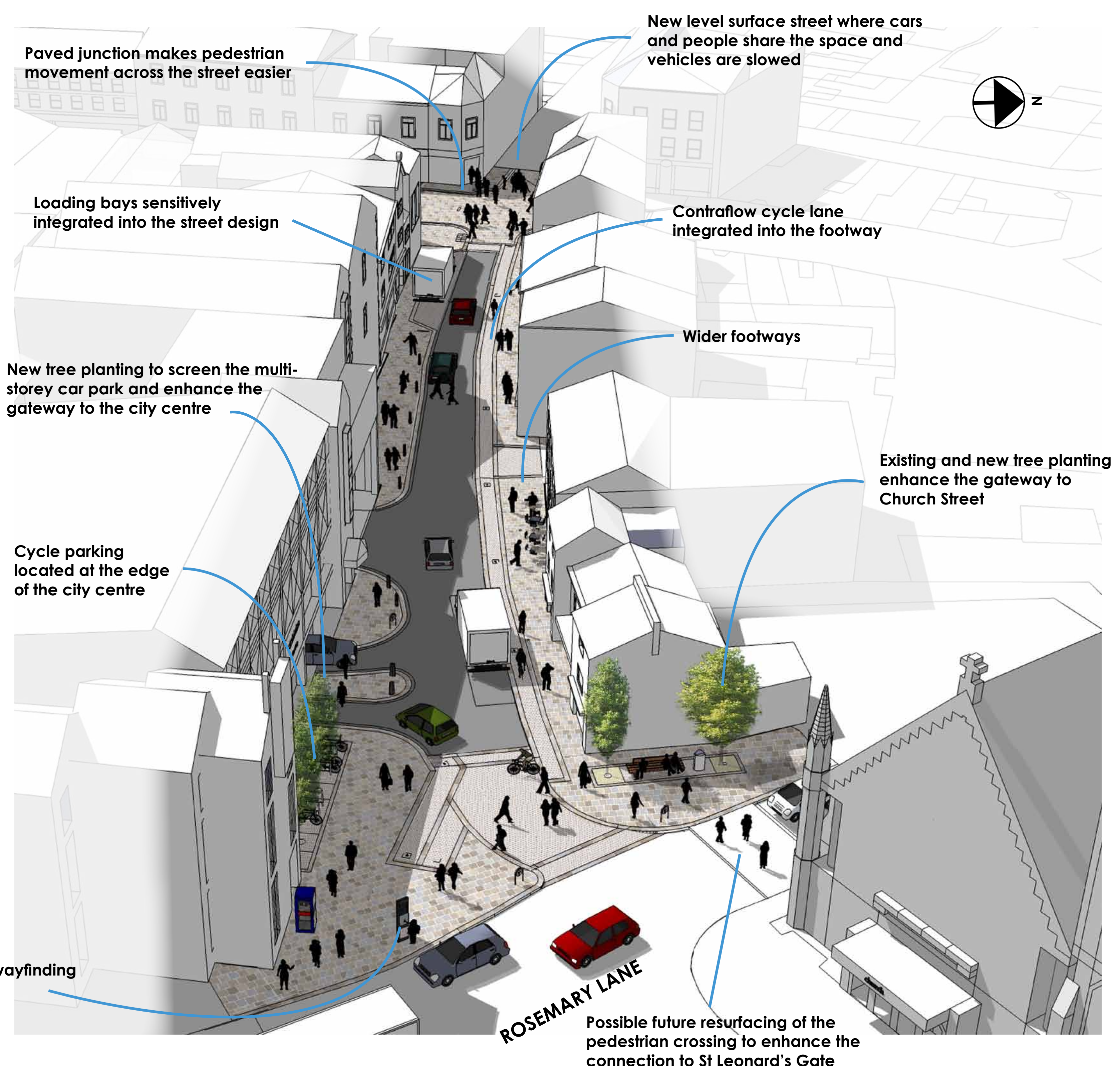
Precedent images



Lower church street



view towards St Nicholas Arcade Car Park



Castle Precinct

The space around the castle is an important route from the city centre to the quayside and surrounding communities. Although the quality of the buildings are outstanding, they are currently let down by the landscape and the dominance of vehicles in the area. The proposals seek to review tree planting to open up views to the John O'Gaunt Gatehouse and reduce parking around the castle entrance. New footpaths, benches, lighting and art works would encourage visitors to explore the historic core and will uncover the rich and vibrant history, folklore and legend of Lancaster.



Whispering Tree Trail

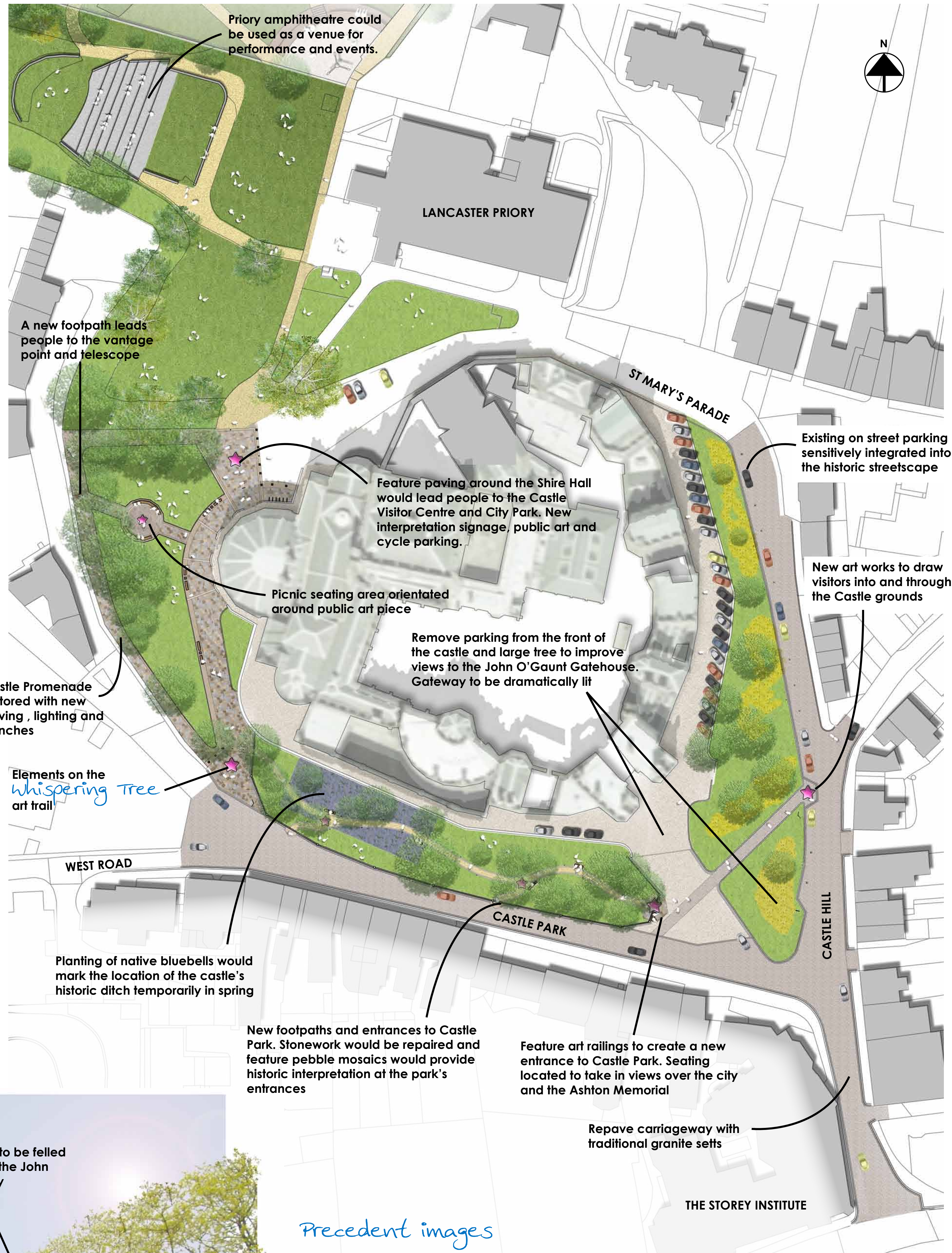
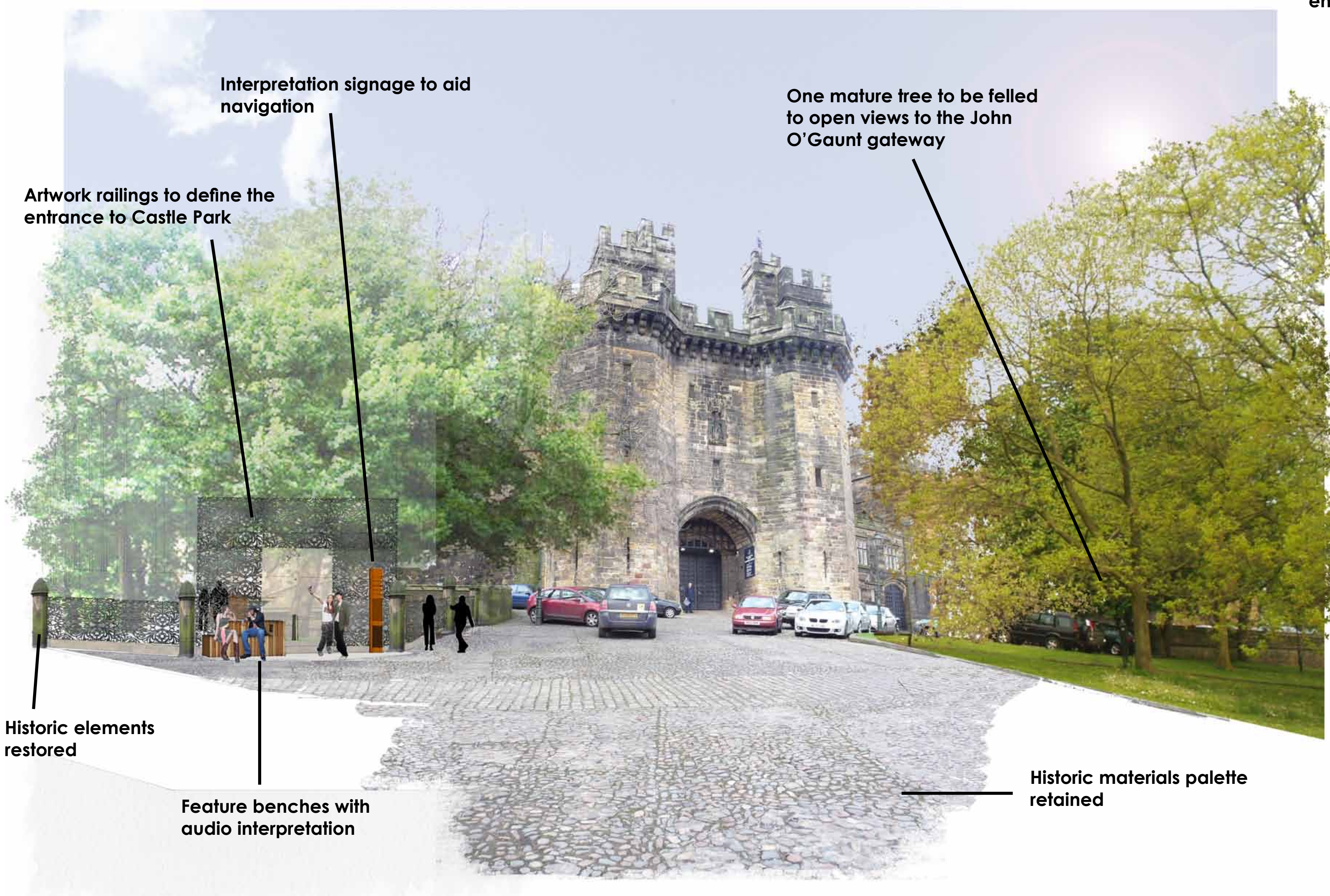
A series of story points along the castle trail will explore some of the legendary Lancaster Castle trials. Sculptural artworks, feature seating, paving, signage and lighting and a complimentary audio commission would lead people around the castle grounds and aid wayfinding in the City's historic quarter.



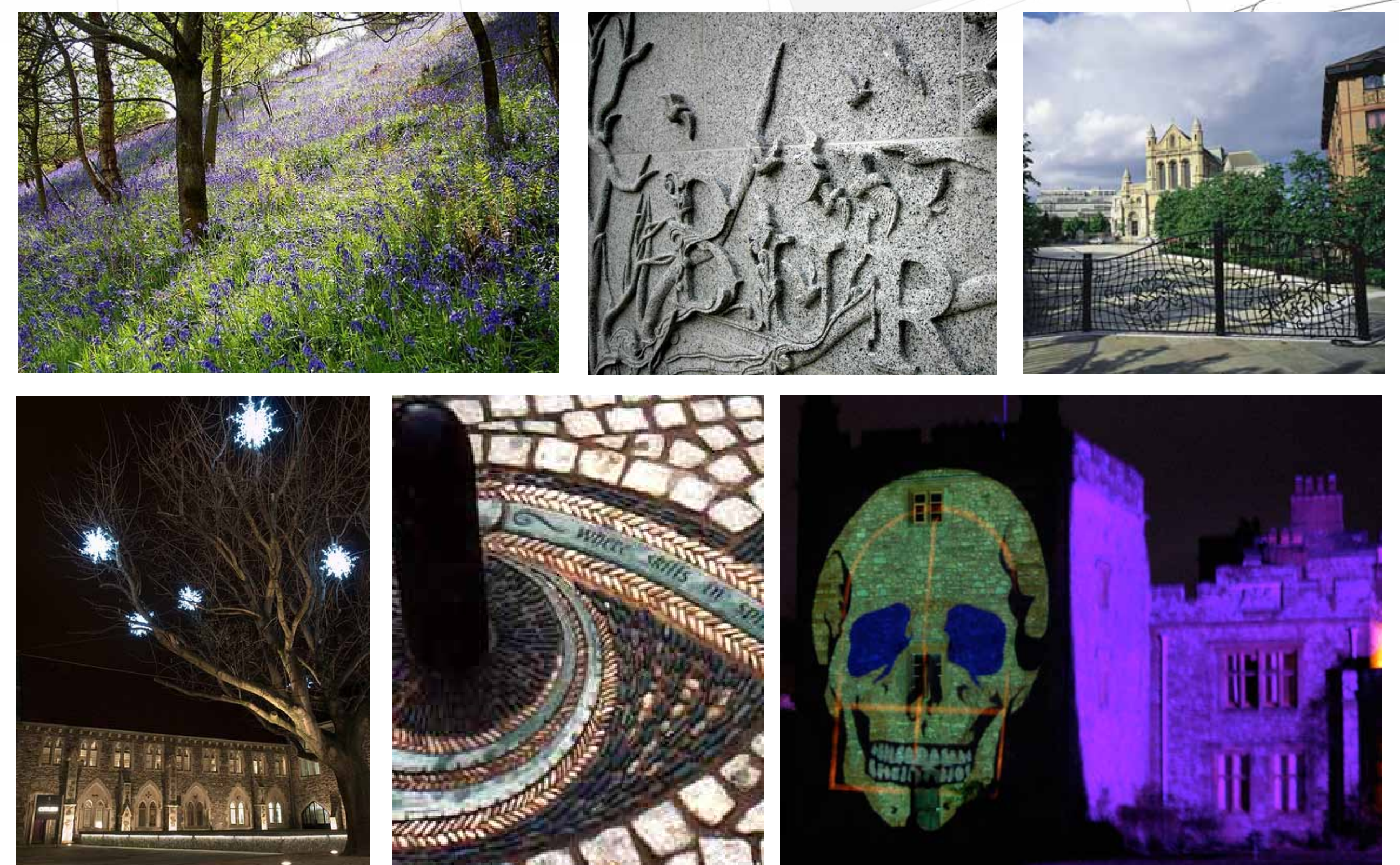
Precedent images



View towards the John O'Gaunt Gatehouse



Precedent images



Materials Palette

We are proposing a materials palette of the highest quality, sourcing natural materials from British quarries and those local to Lancaster in an aim to create both an attractive, locally distinctive and sustainable public realm. A new suite of street furniture, lighting and signage will help to create a unique identity for the city centre. In historic areas, around the Castle Precinct, reference will be made to traditional materials and laying techniques building upon the area's unique character and qualities.



Hard Landscape

Natural stone sourced locally would form the basis for new surfaces, walls and steps in the city centre. Stones of a warm colour would compliment the architecture with feature areas of grey and blue stone to add interest. A palette of Yorkstone would be enhanced with feature areas of Lancashire Gritstone and grey granite. Within the Castle Precinct, traditional materials and laying patterns would enhance the area's historic character. This would include granite sett carriageways and channels and stone pebble mosaics.



Yorkstone setts



Lancashire Gritstone footways



Granite feature paving



Quality detailing



Sandstone walls



Stone pebble mosaics

Street Furniture

Simple, robust high quality street furniture combining natural timbers, stone and dark painted metal in a classic but contemporary design would sit well with the city's architecture. Street furniture, particularly within the Castle Precinct should demonstrate local trades and crafts and tell the tales of Lancaster's Lore and Legends through text, illustration, sound and light.



Comfortable benches



Classic seats



City centre recycling



Simple tree grilles



Improved cycle parking



Stone bollards



Storytelling furniture



Artistic metalwork

Signage & Wayfinding

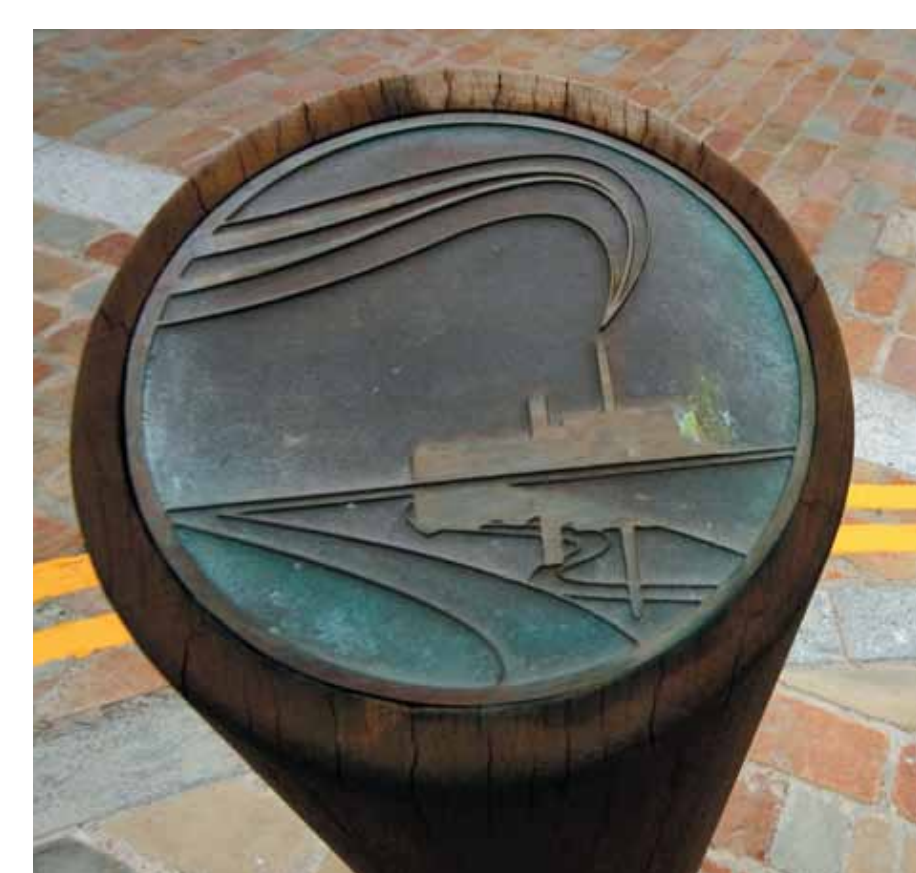
A suite of signage - city maps and fingerposts in a simple, contemporary design would direct people around the city centre. A range of interpretation signage elements would tell the tales of Lancaster's Lore and Legends. Signage will be integrated into street furniture and placed to blend in with the historic buildings alongside key points on the city trail.



City maps



Directional fingerposts



Interpretation material

Lighting

Lighting would be predominantly building mounted to reduce clutter at ground level with feature columns and facade lighting to key buildings creating destinations which lead visitors through the city after dark. New LED light fittings would increase light quality and light levels throughout the city centre. Traditional style light columns would be retained in the Castle Precinct with feature lighting to the Castle and large trees to create a dramatic display.

