

A Local Plan for

Lancaster District

2020 – 2031

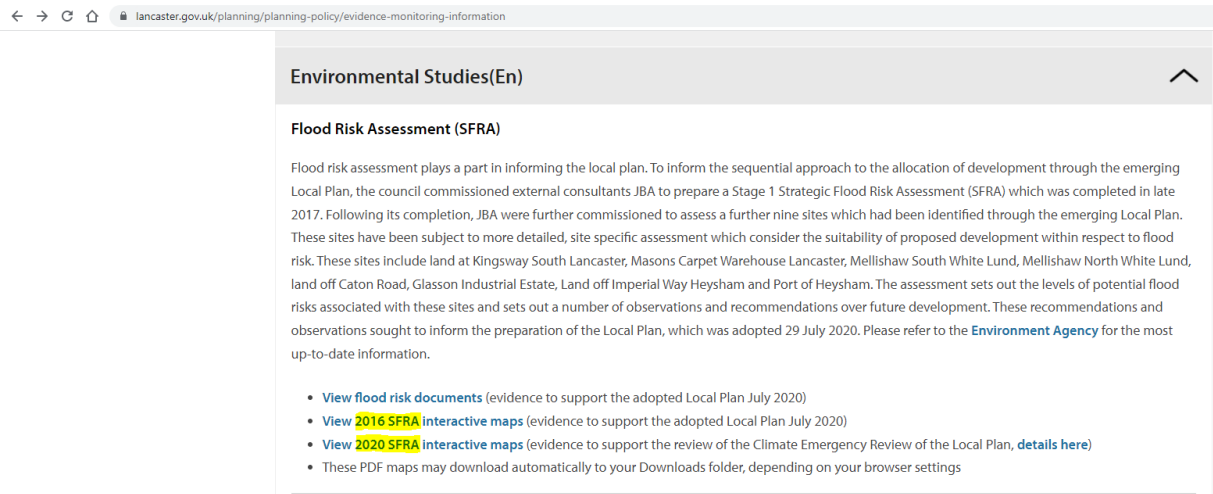
Plan period 2011 - 2031



Strategic Flood Risk Assessment (SFRA) Interactive User Guide

SFRA Interactive Map User Guide

1. Select the relevant SFRA interactive map.



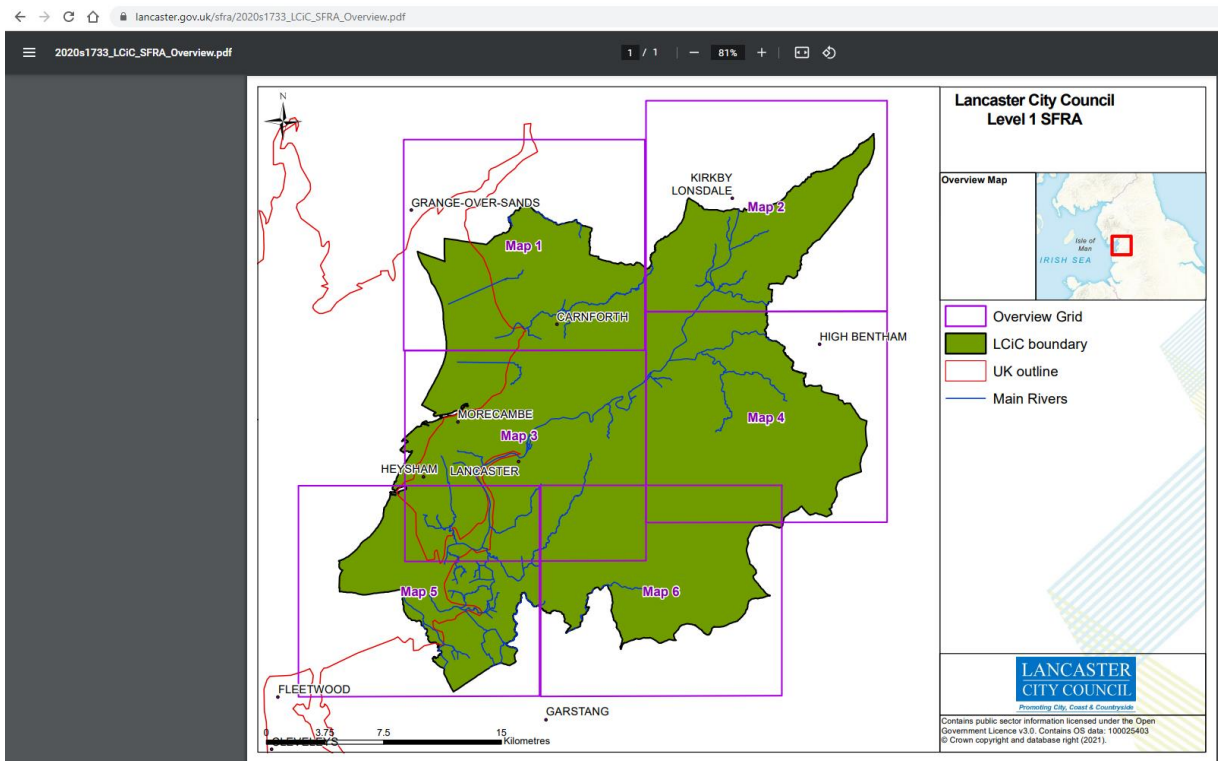
Environmental Studies(En)

Flood Risk Assessment (SFRA)

Flood risk assessment plays a part in informing the local plan. To inform the sequential approach to the allocation of development through the emerging Local Plan, the council commissioned external consultants JBA to prepare a Stage 1 Strategic Flood Risk Assessment (SFRA) which was completed in late 2017. Following its completion, JBA were further commissioned to assess a further nine sites which had been identified through the emerging Local Plan. These sites have been subject to more detailed, site specific assessment which consider the suitability of proposed development within respect to flood risk. These sites include land at Kingsway South Lancaster, Masons Carpet Warehouse Lancaster, Mellishaw South White Lund, Mellishaw North White Lund, land off Caton Road, Glasson Industrial Estate, Land off Imperial Way Heysham and Port of Heysham. The assessment sets out the levels of potential flood risks associated with these sites and sets out a number of observations and recommendations over future development. These recommendations and observations sought to inform the preparation of the Local Plan, which was adopted 29 July 2020. Please refer to the [Environment Agency](#) for the most up-to-date information.

- [View flood risk documents](#) (evidence to support the adopted Local Plan July 2020)
- [View 2016 SFRA interactive maps](#) (evidence to support the adopted Local Plan July 2020)
- [View 2020 SFRA interactive maps](#) (evidence to support the review of the Climate Emergency Review of the Local Plan, [details here](#))
- These PDF maps may download automatically to your Downloads folder, depending on your browser settings

2. Once the PDF opens in your internet browser, click on one of the wider map squares. In the 2016 SFRA, this relates to maps 1 to 4. In the 2020 SFRA, this relates to maps 1 to 6.



2020s1733_LCIC_SFRA_Overview.pdf

1 / 1 | 81%

Lancaster City Council Level 1 SFRA

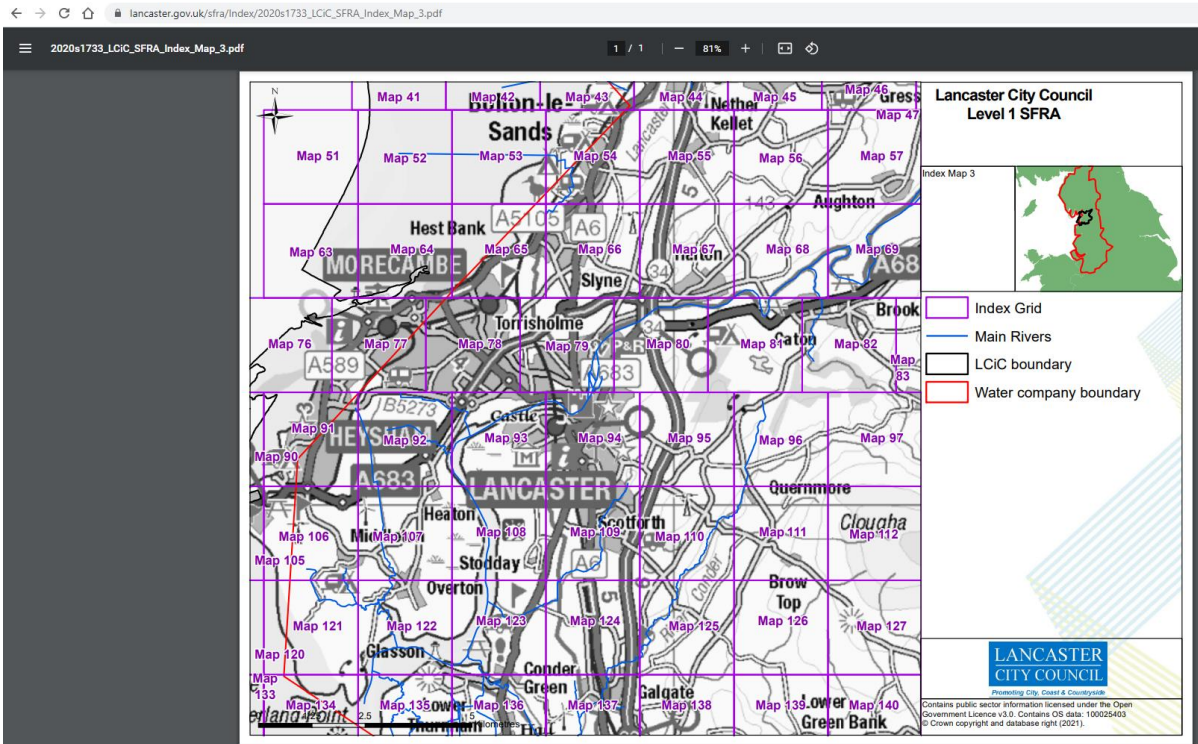
Overview Map

- Overview Grid
- LCIC boundary
- UK outline
- Main Rivers

LANCASTER CITY COUNCIL
Promoting City, Coast & Countryside

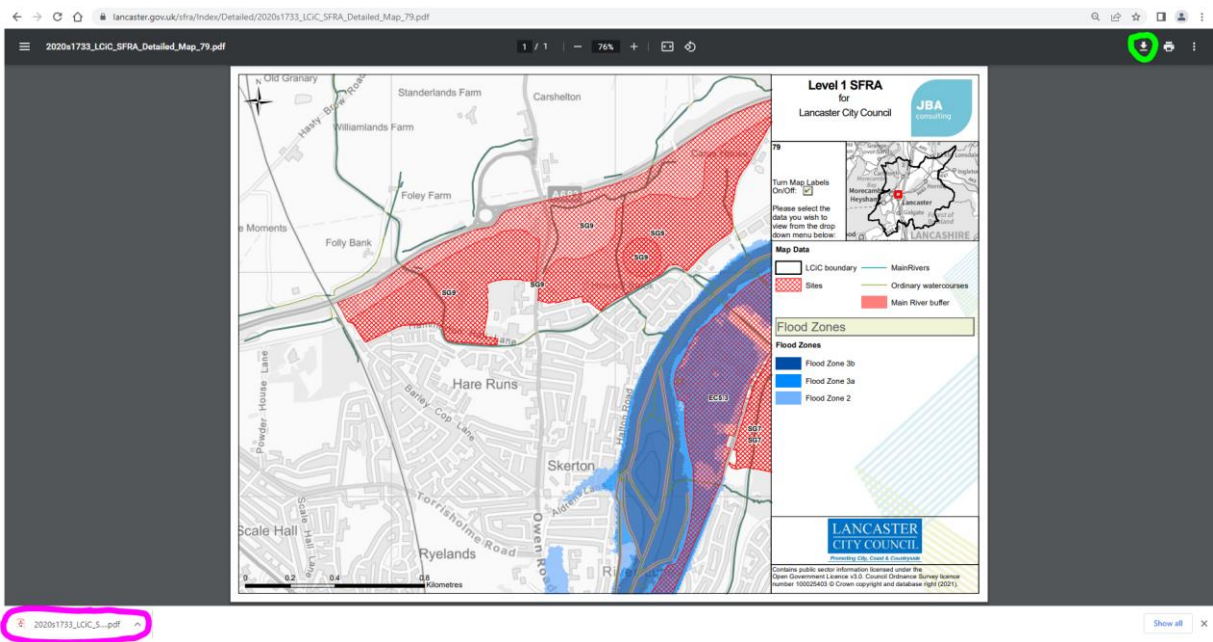
Contains public sector information licensed under the Open Government Licence v3.0. Contains OS data: 100025403 © Crown copyright and database right (2021).

3. Next, select one of the smaller scale map squares to zoom into an area further.



**** To ensure the dropdown layers display on the interactive map follow these next steps.****

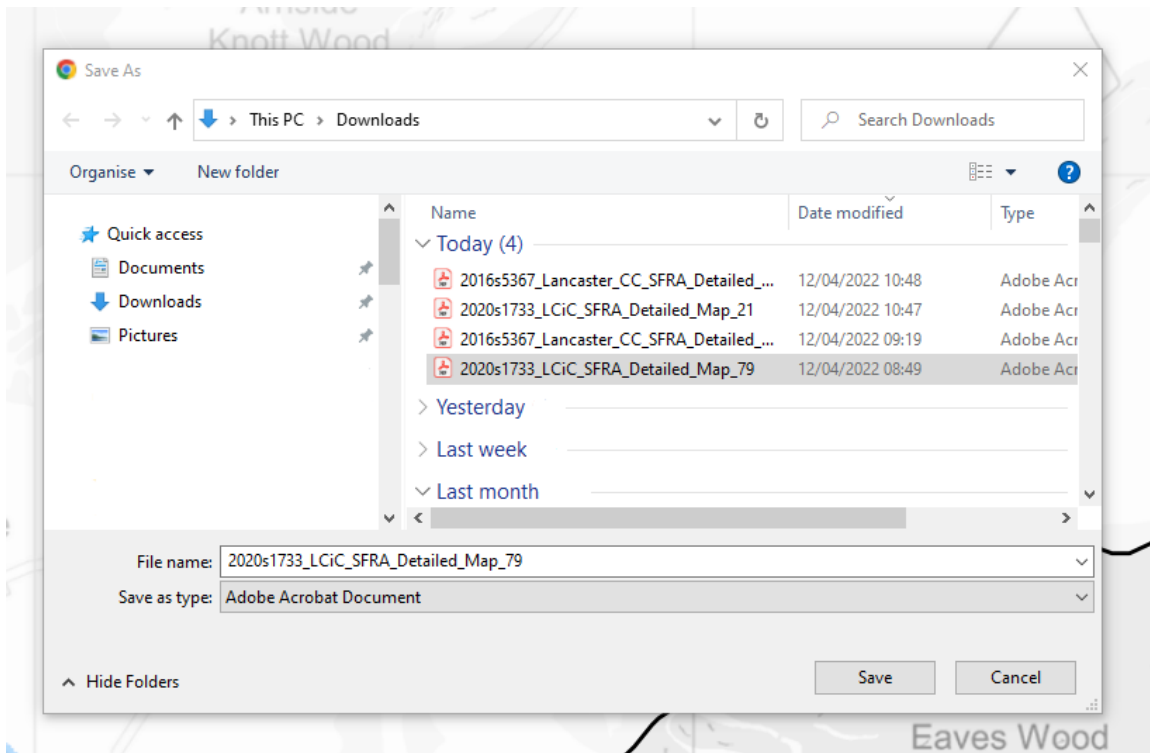
- Once a smaller scale map has opened, to ensure the dropdown layers work, download the map. To download the PDF map, click the downwards arrow in the top right-hand corner of the PDF window. This button is circled in green in the screenshot below.



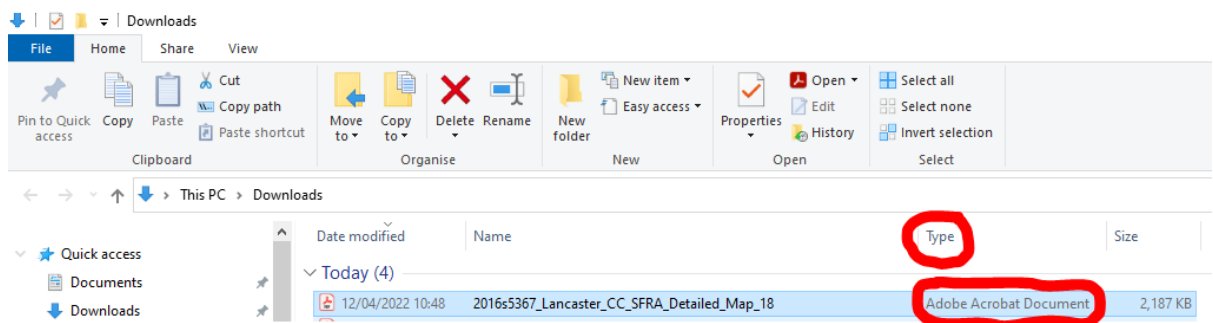
2020s1733_LCIC_S-.pdf



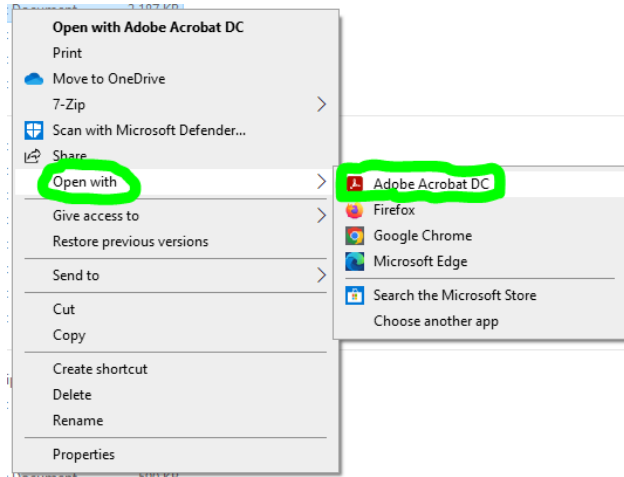
- Once the downloads button is selected, the pop up to 'Save As' appears. The map can be saved where you wish. For this User Guide example, the map is downloaded and saved to the 'Downloads' folder within File Explorer.



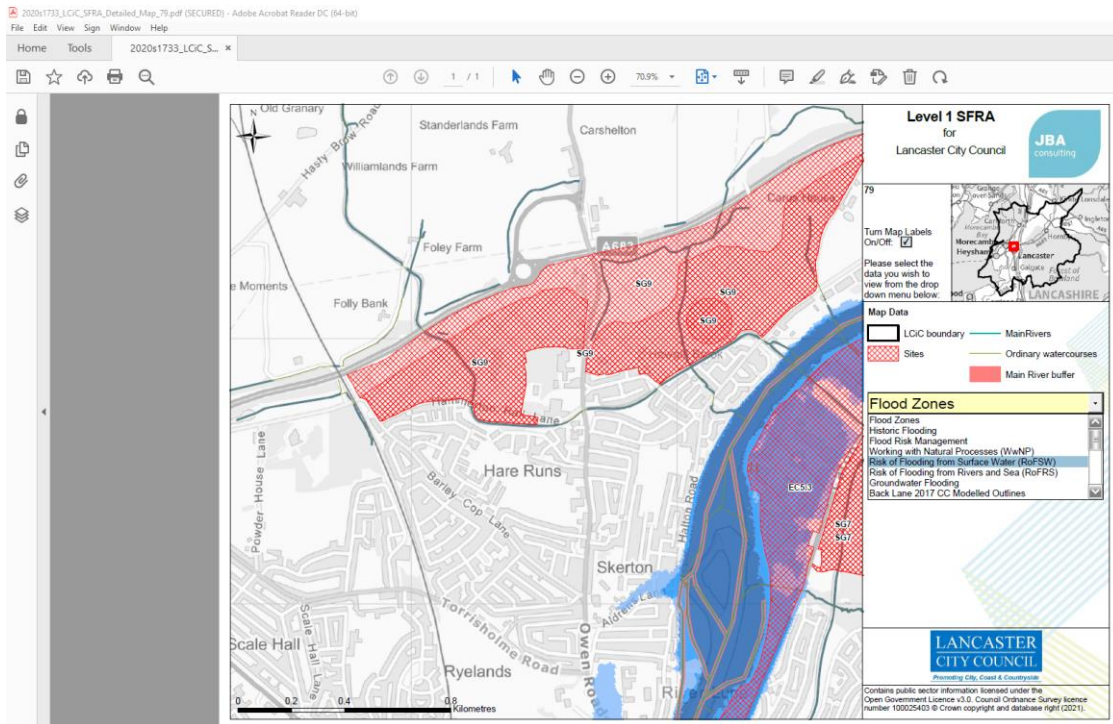
- When save is selected, a downloads bar may appear along the bottom of your browser window with the downloaded PDF (see Step 4 screenshot with downloaded PDF circled in purple). However, it is key to open the PDF directly from your 'Downloads' folder (or wherever you saved the map in step 5) within File Explorer.



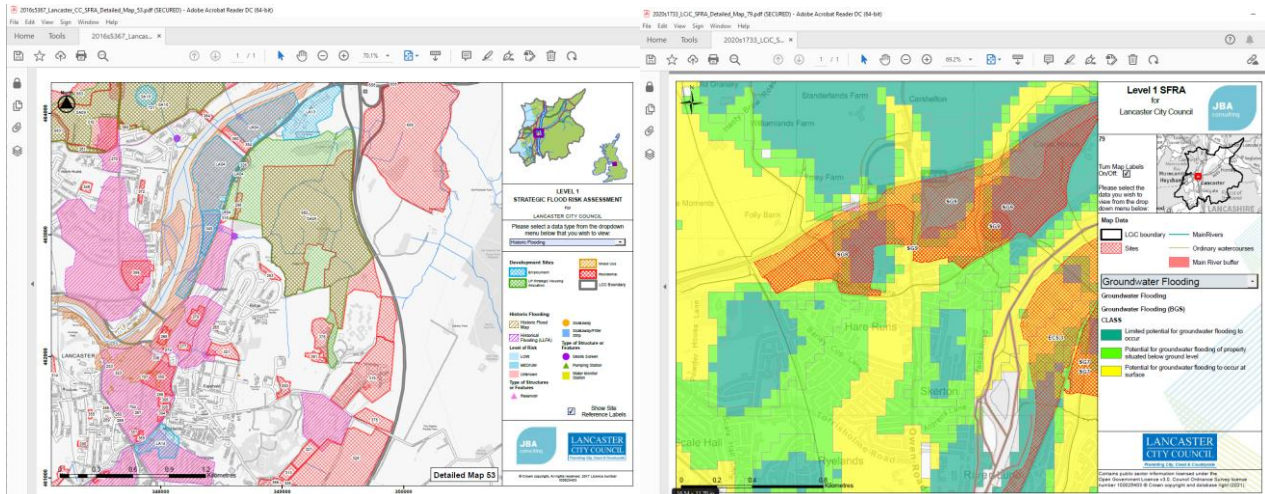
- Before clicking and opening the map in File Explorer, ensure the PDF has the column 'Type' (circled in red in the screenshot in Step 6) as 'Adobe Acrobat Document'. If the type differs, e.g. shows Microsoft Edge or another browser type, this can be changed by right clicking on the document and from the grey pop up that displays hover over 'Open with' and select 'Adobe Acrobat DC'. These options are circled in green in the screenshot below.



- This will open the PDF map in Adobe Acrobat, rather than in your internet browser allowing the interactive layers to work correctly.



- The dropdown layers should now be able to be selected and display directly in the PDF map within Adobe Acrobat. This works for the 2016 and 2020 SFRA interactive maps.



For further help accessing the SFRA Maps, contact Planning Policy: planningpolicy@lancaster.gov.uk